

Anti-MMP12 antibody (200-300) (STJ111106)

STJ111106

GENERAL INFORMATION

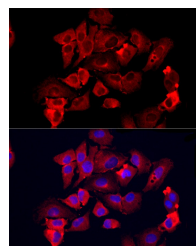
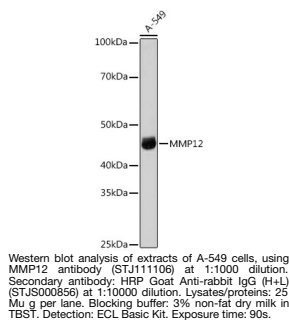
Product Type	Primary antibodies
Short Description	
Applications	WB/IF/ICC/ELISA
Host/Source	Rabbit
Reactivity	Human/Mouse/Rat

PRODUCT PROPERTIES

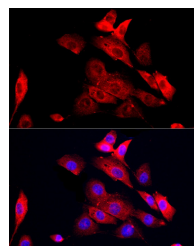
Clonality	Polyclonal
Clone ID	
Concentration	Lot specific
Conjugation	Unconjugated
Purification	Affinity purification
Dilution Range	WB:1:500-1:1000 IF/ICC:1:50-1:200 ELISA:Recommended starting concentration is 1 μ g/mL. Please optimize the concentration based on your specific assay requirements.
Formulation	PBS with 0.05% Proclin300, 50% Glycerol, pH 7.3.
Isotype	IgG
Storage	Store at -20°C for up to 1 year from the date of receipt, and avoid repeat freeze-thaw cycles.
Instruction	

TARGET INFORMATION

Gene ID	4321
Gene Symbol	MMP12
Uniprot ID	MMP12_HUMAN
Immunogen	
Immunogen Region	200-300
Specificity	A synthetic peptide corresponding to a sequence within amino acids 200-300 of human MMP12 (NP_002417.2).
Immunogen Sequence	DEFWTHSGGTNLFITAVHE IGHSLGLGHSSDPKAVMFPT YKYVDINTFRLSADDIRGIQ SLYGDPKENQRLPNPDNSEP ALCDPNLSFDAVTTVGNIKIF F



Immunofluorescence analysis of A-549 cells using MMP12 rabbit polyclonal antibody (STJ111106) at dilution of 1:200 (40x lens). Blue: DAPI for nuclear staining.



Immunofluorescence analysis of NIH/3T3 cells using MMP12 rabbit polyclonal antibody (STJ111106) at dilution of 1:200 (40x lens). Blue: DAPI for nuclear staining.