

Anti-COL1A1 antibody (1189-1205) (STJ111079)

STJ111079

GENERAL INFORMATION

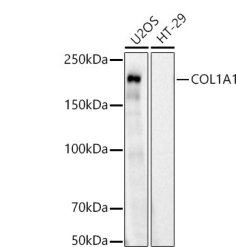
Product Type	Primary antibodies
Short Description	
Applications	WB/IHC-P/IF/ICC/ELISA
Host/Source	Rabbit
Reactivity	Human/Mouse/Rat

PRODUCT PROPERTIES

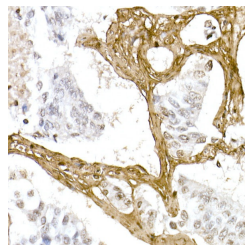
Clonality	Polyclonal
Clone ID	
Concentration	Lot specific
Conjugation	Unconjugated
Purification	Affinity purification
Dilution	WB:1:500-1:1000
Range	IHC-P:1:50-1:200 IF/ICC:1:50-1:200 ELISA:Recommended starting concentration is 1 µg/mL. Please optimize the concentration based on your specific assay requirements.
Formulation	PBS with 0.09% Sodium Azide, 50% Glycerol, pH 7.3.
Isotype	IgG
Storage	Store at -20°C for up to 1 year from the date of receipt, and avoid repeat freeze-thaw cycles.
Instruction	

TARGET INFORMATION

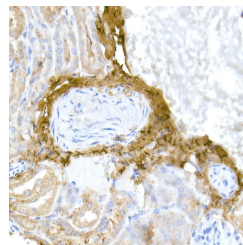
Gene ID	1277
Gene Symbol	COL1A1
Uniprot ID	CO1A1_HUMAN
Immunogen	
Immunogen Region	1189-1205
Specificity	A synthetic peptide corresponding to a sequence within amino acids 1151-1250 of human Collagen I/COL1A1 (NP_000079.2).
Immunogen Sequence	GKDGLNGLPGIPGPPGPRGR TGDAGPVGPPGPPGPPGPPG PPSAGFDFSFLPQPPQEKAH DGGYYRADDANVVRDRDLE VDTTLKLSLQQIENIRSPG SRKNPARTCRDLKMCHSDWK SGEYWIDPNQGCNLDIAKVF CNMETGETCVYPTQPSVAQK NWWISKNPDKRHHVWFGESE TDGFQFEYGGQSDPADVAI QLTLRLMSTEASQNIITYHC KNSVAYMDQQTGNLKKALL



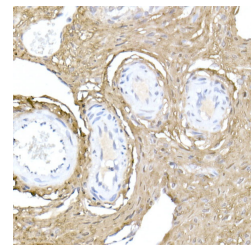
Western blot analysis of various lysates using Collagen I/COL1A1 rabbit polyclonal antibody (STJ111079) at 1:4000 dilution. Secondary antibody:HRP Goat Anti-rabbit IgG (H+L) (STJS000856) at 1:10000 dilution. Lysates/ proteins: 25 µg per lane. Blocking buffer: 3 % non-fat dry milk in TBST. Detection: ECL Basic Kit. Exposure time: 10s.



Immunohistochemistry analysis of paraffin-embedded human lung cancer using Collagen I/COL1A1 rabbit polyclonal antibody (STJ111079) at dilution of 1:100 (40x lens). Perform microwave antigen retrieval with 10 mM PBS buffer pH 7.2 before commencing with immunohistochemistry staining protocol.



Immunohistochemistry analysis of paraffin-embedded mouse kidney using Collagen I/COL1A1 rabbit polyclonal antibody (STJ111079) at dilution of 1:100 (40x lens). Perform microwave antigen retrieval with 10 mM PBS buffer pH 7.2 before commencing with immunohistochemistry staining protocol.



Immunohistochemistry analysis of paraffin-embedded rat ovary using Collagen I/COL1A1 rabbit polyclonal antibody (STJ111079) at dilution of 1:100 (40x lens). Perform microwave antigen retrieval with 10 mM PBS buffer pH 7.2 before commencing with immunohistochemistry staining protocol.

This product is suitable for in-vitro studies under the RESEARCH USE ONLY [RUO] licence. This product must not be used as for diagnostic or other medical purposes.
St John's Laboratory Ltd, Knowledge Dock Business Centre, University Way, London, E16 2RD | Tel: 0208 223 3081