

Anti-Phospho-Camk2a-T286 antibody (300-400 aa) [SRM] (STJ11107739)

STJ11107739

GENERAL INFORMATION

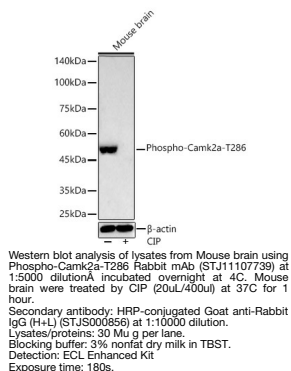
Product Type	Primary antibodies
Short Description	
Applications	WB/ELISA
Host/Source	Rabbit
Reactivity	Mouse

PRODUCT PROPERTIES

Clonality	Monoclonal
Clone ID	SRM
Concentration	Lot specific
Conjugation	Unconjugated
Purification	Affinity purification
Dilution Range	WB:1:2500-1:5000 ELISA:Recommended starting concentration is 1 Mu g/mL. Please optimize the concentration based on your specific assay requirements.
Formulation	PBS with 0.09% Sodium Azide, 0.05% BSA, 50% Glycerol, pH 7.3.
Isotype	IgG
Storage Instruction	

TARGET INFORMATION

Gene ID	815
Gene Symbol	CAMK2A
Uniprot ID	KCC2A_HUMAN
Immunogen	
Immunogen Region	300-400 aa
Specificity	A synthetic peptide corresponding to a sequence within amino acids 300-400 of human Camk2a (NP_741960.1).
Immunogen Sequence	KGAILTTMLATRNFGSGKSG GNKKSDGVKESSESTNTTIE DEDTKVRKQEIIVTEQLIE AISNGDFESYTKMCDPGMTA FEPEALGNLVEGLDFHRFYF E



This product is suitable for in-vitro studies under the RESEARCH USE ONLY [RUO] licence. This product must not be used as for diagnostic or other medical purposes.
St John's Laboratory Ltd, Knowledge Dock Business Centre, University Way, London, E16 2RD | Tel: 0208 223 3081