

## Anti-Phospho-S6 Ribosomal Protein-S240/244 antibody [SRM] (STJ11107738)

STJ11107738

### GENERAL INFORMATION

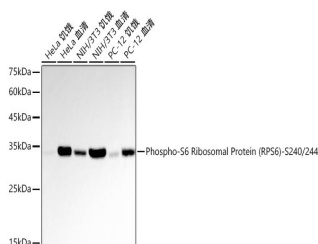
<b>Product Type</b>	Primary antibodies
<b>Short Description</b>	
<b>Applications</b>	WB/ELISA
<b>Host/Source</b>	Rabbit
<b>Reactivity</b>	Human/Mouse/Rat

### PRODUCT PROPERTIES

<b>Clonality</b>	Monoclonal
<b>Clone ID</b>	SRM
<b>Concentration</b>	Lot specific
<b>Conjugation</b>	Unconjugated
<b>Purification</b>	Affinity purification
<b>Dilution Range</b>	WB:1:54000-1:162000 ELISA:Recommended starting concentration is 1 Mu g/mL. Please optimize the concentration based on your specific assay requirements.
<b>Formulation</b>	PBS with 0.09% Sodium Azide, 0.05% BSA, 50% Glycerol, pH 7.3.
<b>Isotype</b>	IgG
<b>Storage Instruction</b>	

### TARGET INFORMATION

<b>Gene ID</b>	6194
<b>Gene Symbol</b>	RPS6
<b>Uniprot ID</b>	RS6_HUMAN
<b>Immunogen</b>	STSKS
<b>Immunogen Region</b>	
<b>Specificity</b>	A synthetic phosphorylated peptide around S240 & S244 of human RPS6 (NP_001001.2).
<b>Immunogen Sequence</b>	STSKS



Western blot analysis of various lysates using Phospho-S6 Ribosomal Protein (RPS6) -S240/244 Rabbit mAb (STJ11107738) at 1:54000 dilution. Incubated overnight at 4°C. HeLa, NIH/3T3 and PC-12 cells were treated by 10% FBS at 37°C for 30 minutes after serum-starvation overnight.  
Secondary antibody: HRP-conjugated Goat anti-Rabbit IgG (H+L) (STJS000856) at 1:10000 dilution.  
Lysates/proteins: 30 Mu g per lane.  
Blocking buffer: 3% nonfat dry milk in TBST.  
Detection: ECL Basic Kit  
Exposure time: 30s.

This product is suitable for in-vitro studies under the RESEARCH USE ONLY [RUO] licence. This product must not be used as for diagnostic or other medical purposes.  
St John's Laboratory Ltd, Knowledge Dock Business Centre, University Way, London, E16 2RD | Tel: 0208 223 3081