

## Anti-Phospho-AKT1S1/PRAS40-T246 antibody [SRM] (STJ11107731)

STJ11107731

### GENERAL INFORMATION

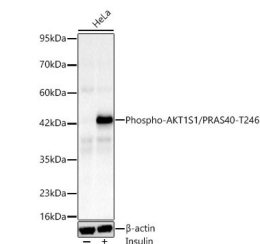
<b>Product Type</b>	Primary antibodies
<b>Short Description</b>	
<b>Applications</b>	WB/ELISA
<b>Host/Source</b>	Rabbit
<b>Reactivity</b>	Human/Mouse

### PRODUCT PROPERTIES

<b>Clonality</b>	Monoclonal
<b>Clone ID</b>	SRM
<b>Concentration</b>	Lot specific
<b>Conjugation</b>	Unconjugated
<b>Purification</b>	Affinity purification
<b>Dilution Range</b>	WB:1:2000-1:9000 ELISA:Recommended starting concentration is 1 µg/mL. Please optimize the concentration based on your specific assay requirements.
<b>Formulation</b>	PBS with 0.05% Proclin300, 0.05% BSA, 50% Glycerol, pH 7.3.
<b>Isotype</b>	IgG
<b>Storage Instruction</b>	

### TARGET INFORMATION

<b>Gene ID</b>	84335
<b>Gene Symbol</b>	AKT1S1
<b>Uniprot ID</b>	AKTS1_HUMAN
<b>Immunogen</b>	LNT (p) SD
<b>Immunogen Region</b>	
<b>Specificity</b>	A synthetic phosphorylated peptide around T246 of human AKT1S1/PRAS40 (NP_001265088.1).
<b>Immunogen Sequence</b>	LNT (p) SD



Western blot analysis of lysates from HeLa cells using Phospho-AKT1S1/PRAS40-T246 Rabbit mAb (STJ11107731) at 1:8100 dilution. Cells were incubated overnight at 4°C. HeLa cells were treated by Insulin (50 nM) at 37°C for 5 minutes after serum-starvation overnight. Secondary antibody: HRP-conjugated Goat anti-Rabbit IgG (H+L) (STJS000856) at 1:10000 dilution. Lysates/proteins: 30 µg per lane. Blocking buffer: 3% nonfat dry milk in TBST. Detection: ECL Basic Kit. Exposure time: 60s.

This product is suitable for in-vitro studies under the RESEARCH USE ONLY [RUO] licence. This product must not be used as for diagnostic or other medical purposes.  
St John's Laboratory Ltd, Knowledge Dock Business Centre, University Way, London, E16 2RD | Tel: 0208 223 3081