

Anti-Phospho-SnRK2.6-S175 antibody (STJ11107728)

STJ11107728

GENERAL INFORMATION

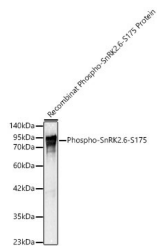
Product Type	Primary antibodies
Short Description	
Applications	WB/ELISA
Host/Source	Rabbit
Reactivity	A.thaliana

PRODUCT PROPERTIES

Clonality	Polyclonal
Clone ID	
Concentration	Lot specific
Conjugation	Unconjugated
Purification	Affinity purification
Dilution Range	WB:1:500-1:1000 ELISA:Recommended starting concentration is 1 µg/mL. Please optimize the concentration based on your specific assay requirements.
Formulation	PBS with 0.05% Proclin300, 50% Glycerol, pH 7.3.
Isotype	IgG
Storage Instruction	

TARGET INFORMATION

Gene ID	
Gene Symbol	
Uniprot ID	
Immunogen	PKS (p) TV
Immunogen Region	
Specificity	A synthetic phosphorylated peptide around S175 of Arabidopsis thaliana SnRK2.6 (NP_567945.1).
Immunogen Sequence	PKS (p) TV



Western blot analysis of lysates from recombinant Phospho-SnRK2.6-S175 Protein using Phospho-SnRK2.6-S175 pAb (STJ11107728) at 1:500 dilution incubated overnight at 4°C. Secondary antibody: HRP-conjugated Goat anti-Rabbit IgG (H+L) (STJS000856) at 1:10000 dilution. Lysates/proteins: 100 ng per lane. Blocking buffer: 3% nonfat dry milk in TBST. Detection: ECL Basic Kit (5 s).

This product is suitable for in-vitro studies under the RESEARCH USE ONLY [RUO] licence. This product must not be used as for diagnostic or other medical purposes.
St John's Laboratory Ltd, Knowledge Dock Business Centre, University Way, London, E16 2RD | Tel: 0208 223 3081