

**Anti-Phospho-NF2-S518 antibody (STJ11107692)**  
STJ11107692

**GENERAL INFORMATION**

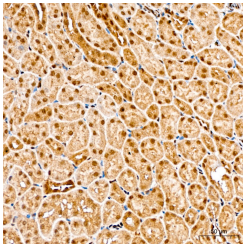
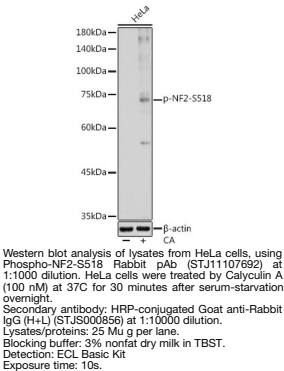
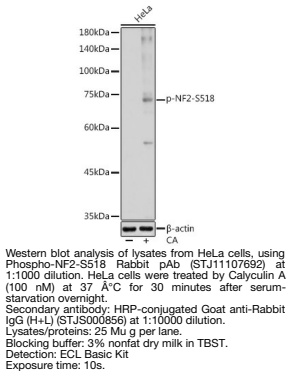
|                          |                    |
|--------------------------|--------------------|
| <b>Product Type</b>      | Primary antibodies |
| <b>Short Description</b> |                    |
| <b>Applications</b>      | WB/IHC-P/ELISA     |
| <b>Host/Source</b>       | Rabbit             |
| <b>Reactivity</b>        | Human/Mouse/Rat    |

**PRODUCT PROPERTIES**

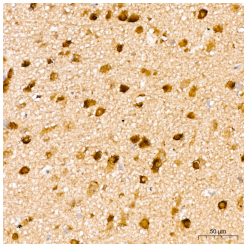
|                            |  |
|----------------------------|--|
| <b>Clonality</b>           | Polyclonal   |
| <b>Clone ID</b>            |  |
| <b>Concentration</b>       | Lot specific   |
| <b>Conjugation</b>         | Unconjugated   |
| <b>Purification</b>        | Affinity purification  |
| <b>Dilution Range</b>      | WB:1:500-1:1000<br>IHC-P:1:50-1:200<br>ELISA:Recommended starting concentration is 1 Mu g/mL. Please optimize the concentration based on your specific assay requirements. |
| <b>Formulation</b>         | PBS with 0.09% Sodium Azide, 50% Glycerol, pH 7.3.   |
| <b>Isotype</b>             | IgG  |
| <b>Storage Instruction</b> |  |

**TARGET INFORMATION**

|                           |  |
|---------------------------|--|
| <b>Gene ID</b>            | 4771   |
| <b>Gene Symbol</b>        | NF2  |
| <b>Uniprot ID</b>         | MERL_HUMAN   |
| <b>Immunogen</b>          | RLSME  |
| <b>Immunogen Region</b>   |  |
| <b>Specificity</b>        | A synthetic phosphorylated peptide around S518 of human NF2 (NP_000259.1). |
| <b>Immunogen Sequence</b> | RLSME  |



Immunohistochemistry analysis of paraffin-embedded Mouse kidney tissue using Phospho-NF2-S518 Rabbit pAb (STJ11107692) at a dilution of 1:200 (40x lens). High pressure antigen retrieval performed with 0. 01M Citrate Buffer (pH 6. 0) prior to immunohistochemistry staining.



Immunohistochemistry analysis of paraffin-embedded Rat brain tissue using Phospho-NF2-S518 Rabbit pAb (STJ11107692) at a dilution of 1:200 (40x lens). High pressure antigen retrieval performed with 0. 01M Citrate Buffer (pH 6. 0) prior to immunohistochemistry staining.

This product is suitable for in-vitro studies under the RESEARCH USE ONLY [RUO] licence. This product must not be used as for diagnostic or other medical purposes.  
St John's Laboratory Ltd, Knowledge Dock Business Centre, University Way, London, E16 2RD | Tel: 0208 223 3081