

Anti-Phospho-SERCA2/ATP2A2-Thr484 antibody (STJ11107681)

STJ11107681

GENERAL INFORMATION

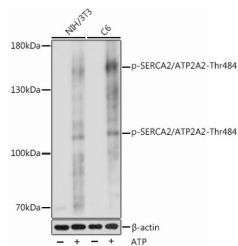
Product Type	Primary antibodies
Short Description	
Applications	WB/ELISA
Host/Source	Rabbit
Reactivity	Human/Mouse/Rat

PRODUCT PROPERTIES

Clonality	Polyclonal
Clone ID	
Concentration	Lot specific
Conjugation	Unconjugated
Purification	Affinity purification
Dilution Range	WB:1:500-1:2000 ELISA:Recommended starting concentration is 1 µg/mL. Please optimize the concentration based on your specific assay requirements.
Formulation	PBS with 0.01% Thimerosal, 50% Glycerol, pH 7.3.
Isotype	IgG
Storage Instruction	

TARGET INFORMATION

Gene ID	488
Gene Symbol	ATP2A2
Uniprot ID	AT2A2_HUMAN
Immunogen	KEFTLE
Immunogen Region	
Specificity	A synthetic phosphorylated peptide around T484 of SERCA2/ATP2A2 (NP_733765.1).
Immunogen Sequence	KEFTLE



Western blot analysis of various lysates using Phospho-SERCA2/ATP2A2-Thr484 Rabbit pAb (STJ11107681) at 1:1000 dilution. NIH/3T3 cells were treated by ATP (5 mM) at 30 °C for 1 hour. C6 cells were treated by ATP (5 mM) at 30 °C for 1 hour.
Secondary antibody: HRP-conjugated Goat anti-Rabbit IgG (H+L) (STJS000856) at 1:10000 dilution.
Lysates/proteins: 25 µg per lane.
Blocking buffer: 3% BSA.
Detection: ECL Basic Kit
Exposure time: 1s.

This product is suitable for in-vitro studies under the RESEARCH USE ONLY [RUO] licence. This product must not be used as for diagnostic or other medical purposes.
St John's Laboratory Ltd, Knowledge Dock Business Centre, University Way, London, E16 2RD | Tel: 0208 223 3081