

Anti-Phospho-p38 MAPK-T180 antibody (STJ11107612)

STJ11107612

GENERAL INFORMATION

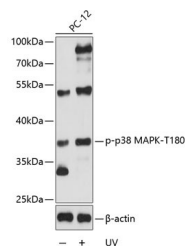
Product Type	Primary antibodies
Short Description	
Applications	WB/ELISA
Host/Source	Rabbit
Reactivity	Human/Rat

PRODUCT PROPERTIES

Clonality	Polyclonal
Clone ID	
Concentration	Lot specific
Conjugation	Unconjugated
Purification	Affinity purification
Dilution Range	WB:1:500-1:2000 ELISA:Recommended starting concentration is 1 µg/mL. Please optimize the concentration based on your specific assay requirements.
Formulation	PBS with 0.02% Sodium Azide, 50% Glycerol, pH 7.3.
Isotype	IgG
Storage Instruction	

TARGET INFORMATION

Gene ID	1432
Gene Symbol	MAPK14
Uniprot ID	MK14_HUMAN
Immunogen	EMTGY
Immunogen Region	
Specificity	A synthetic phosphorylated peptide around T180 of human p38 MAPK (NP_620581.1).
Immunogen Sequence	EMTGY



Western blot analysis of lysates from PC-12 cells, using Phospho-p38 MAPK-T180 Rabbit pAb (STJ11107612) at 1:2000 dilution. PC-12 cells were treated by UV for 15-30 minutes.
Secondary antibody: HRP-conjugated Goat anti-Rabbit IgG (H+L) (STJS000856) at 1:10000 dilution.
Lysates/proteins: 25 µg per lane.
Blocking buffer: 3% BSA.
Detection: ECL Basic Kit
Exposure time: 10S.

This product is suitable for in-vitro studies under the RESEARCH USE ONLY [RUO] licence. This product must not be used as for diagnostic or other medical purposes.
St John's Laboratory Ltd, Knowledge Dock Business Centre, University Way, London, E16 2RD | Tel: 0208 223 3081