

Anti-Phospho-p38 MAPK-Y322 antibody (STJ11107611)

STJ11107611

GENERAL INFORMATION

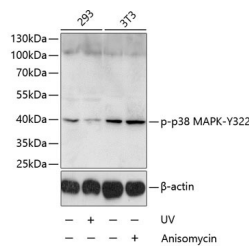
Product Type	Primary antibodies
Short Description	
Applications	WB/ELISA
Host/Source	Rabbit
Reactivity	Human/Mouse

PRODUCT PROPERTIES

Clonality	Polyclonal
Clone ID	
Concentration	Lot specific
Conjugation	Unconjugated
Purification	Affinity purification
Dilution Range	WB:1:500-1:2000 ELISA:Recommended starting concentration is 1 Mu g/mL. Please optimize the concentration based on your specific assay requirements.
Formulation	PBS with 0.02% Sodium Azide, 50% Glycerol, pH 7.3.
Isotype	IgG
Storage Instruction	

TARGET INFORMATION

Gene ID	1432
Gene Symbol	MAPK14
Uniprot ID	MK14_HUMAN
Immunogen	DPYDQ
Immunogen Region	
Specificity	A synthetic phosphorylated peptide around Y322 of human p38 MAPK (NP_620581.1).
Immunogen Sequence	DPYDQ



Western blot analysis of lysates from 293 and NIH/3T3 cells, using Phospho-p38 MAPK-Y322 Rabbit pAb (STJ11107611) at 1:1000 dilution. 293 cells were treated by UV for 15-30 minutes. NIH/3T3 cells were treated by Anisomycin (25 Mu g/mL) for 30 minutes. Secondary antibody: HRP-conjugated Goat anti-Rabbit IgG (H+L) (STJS000856) at 1:10000 dilution. Lysates/proteins: 25 Mu g per lane. Blocking buffer: 3% BSA. Detection: ECL Basic Kit. Exposure time: 15s.

This product is suitable for in-vitro studies under the RESEARCH USE ONLY [RUO] licence. This product must not be used as for diagnostic or other medical purposes.
St John's Laboratory Ltd, Knowledge Dock Business Centre, University Way, London, E16 2RD | Tel: 0208 223 3081