

Anti-mCherry-Tag antibody (1-236 aa) [SRM] (STJ11107600)

STJ11107600

GENERAL INFORMATION

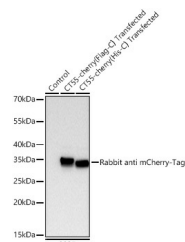
Product Type	Primary antibodies
Short Description	
Applications	WB/IP/ELISA
Host/Source	Rabbit
Reactivity	Species independent

PRODUCT PROPERTIES

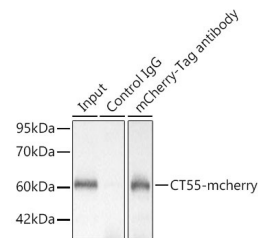
Clonality	Monoclonal
Clone ID	SRM
Concentration	Lot specific
Conjugation	Unconjugated
Purification	Affinity purification
Dilution	WB:1:10000-1:40000
Range	IP:0.5 Mu g-4 Mu g antibody for 200 Mu g-600 Mu g extracts of whole cells ELISA:Recommended starting concentration is 1 Mu g/mL. Please optimize the concentration based on your specific assay requirements.
Formulation	PBS with 0.09% Sodium Azide, 0.05% BSA, 50% Glycerol, pH 7.3.
Isotype	IgG
Storage	
Instruction	

TARGET INFORMATION

Gene ID	
Gene Symbol	
Uniprot ID	
Immunogen	
Immunogen Region	1-236 aa
Specificity	Recombinant fusion protein containing a sequence corresponding to amino acids 1-236 of Discosoma MCherry fluorescent proteinm.
Immunogen Sequence	MVSKGEEDNMAIKEFMRFK VHMEGSVNGHEFEIEGEGEG RPYEGTQTAKLKVTGGGLP FAWDILSPQFMYGSKAYVKH PADIPDYLKLSFPEGFKWER VMNFEDGGVVTVTQDSSLQD GEFIYKVKLRGTNFPDGPV MQKKTMGWEASSERMYPEDG ALKGEIKQRLKLDGGHYDA EVKTTYKAKKPQLPGAYNV NIKLDITSHNEDYTIVEQE RAEGRHSTGGMDLYK



Western blot analysis of lysates from wild type (WT) and 293F cells transfected with mCherry using Rabbit anti mCherry-Tag mAb (STJ11107600) at 1:20000 dilution incubated overnight at 4°C.
Secondary antibody: HRP-conjugated Goat anti-Rabbit IgG (H+L) (STJ5000856) at 1:10000 dilution.
Lysates/proteins: 20 Mu g per lane.
Blocking buffer: 3% nonfat dry milk in TBST.
Detection: ECL Basic Kit (Exposure time: 45s).



Immunoprecipitation of CT55-mCherry from 300 Åg extracts of 293F cells transfected with a CT55 expression vector containing a single C-terminal mCherry-Tag was performed using 3 Åg of mCherry-Tag Rabbit mAb (STJ11107600). Rabbit IgG isotype control (STJ11105763) was used to precipitate the Control IgG sample. IP samples were eluted with 1X Laemmli Buffer. The Input lane represents 10 % of the total input. Western blot analysis of immunoprecipitates was conducted using mCherry-Tag Rabbit mAb (STJ11107600) at a dilution of 1:6000.

This product is suitable for in-vitro studies under the RESEARCH USE ONLY [RUO] licence. This product must not be used as for diagnostic or other medical purposes.
St John's Laboratory Ltd, Knowledge Dock Business Centre, University Way, London, E16 2RD | Tel: 0208 223 3081