

**Anti-Rabbit IgG antibody {Magnetic Beads} (STJ11107561)**  
STJ11107561

**GENERAL INFORMATION**

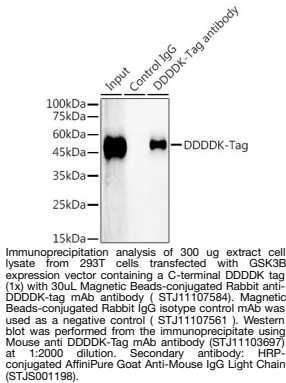
<b>Product Type</b>	Primary antibodies
<b>Short Description</b>	
<b>Applications</b>	IP
<b>Host/Source</b>	Rabbit
<b>Reactivity</b>	

**PRODUCT PROPERTIES**

<b>Clonality</b>	
<b>Clone ID</b>	
<b>Concentration</b>	Lot specific
<b>Conjugation</b>	Magnetic Beads
<b>Purification</b>	Protein A/G purification
<b>Dilution Range</b>	IP:30ul antibody (bead slurry) for 200 Mu g-400 Mu g extracts of whole cells
<b>Formulation</b>	PBS with 0.05% Proclin300, pH 7.3.
<b>Isotype</b>	IgG
<b>Storage Instruction</b>	

**TARGET INFORMATION**

<b>Gene ID</b>	
<b>Gene Symbol</b>	
<b>Uniprot ID</b>	
<b>Immunogen</b>	
<b>Immunogen Region</b>	
<b>Specificity</b>	None
<b>Immunogen Sequence</b>	



This product is suitable for in-vitro studies under the RESEARCH USE ONLY [RUO] licence. This product must not be used as for diagnostic or other medical purposes.  
St John's Laboratory Ltd, Knowledge Dock Business Centre, University Way, London, E16 2RD | Tel: 0208 223 3081