

Anti-Beta-Tubulin antibody [SMM] (STJ11107557)
STJ11107557

GENERAL INFORMATION

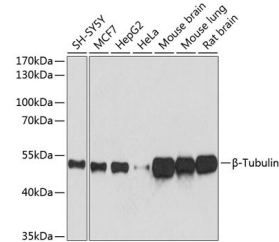
Product Type	Primary antibodies
Short Description	
Applications	WB/IHC-P/IF/ICC/IP/ELISA
Host/Source	Mouse
Reactivity	Human/Mouse/Rat/Hamster/Monkey/Goat/C.reinhardtii

PRODUCT PROPERTIES

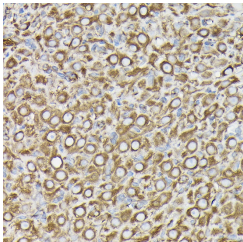
Clonality	Monoclonal
Clone ID	SMM
Concentration	Lot specific
Conjugation	Unconjugated
Purification	Affinity purification
Dilution Range	WB:1:5000-1:10000 IHC-P:1:50-1:200 IF/ICC:1:50-1:200 IP:0.5ug-4ug antibody for 200ug-400ug extracts of whole cells ELISA:Recommended starting concentration is 1 Mu g/mL. Please optimize the concentration based on your specific assay r
Formulation	PBS with 0.02% Sodium Azide, 1% BSA, 50% Glycerol, pH 7.3.
Isotype	IgG1
Storage Instruction	

TARGET INFORMATION

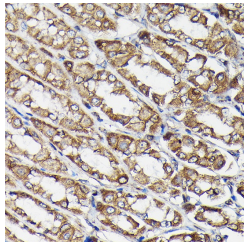
Gene ID	203068
Gene Symbol	TUBB
Uniprot ID	TBB5_HUMAN
Immunogen	
Immunogen Region	
Specificity	Recombinant protein of human Beta-Tubulin
Immunogen Sequence	



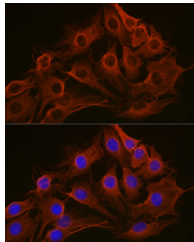
Western blot analysis of various lysates using Beta-Tubulin Mouse mAb (STJ11107557) at 1:5000 dilution. Secondary antibody: HRP-conjugated Goat anti-Mouse IgG (H+L) (STJ5000854) at 1:10000 dilution. Lysates/proteins: 25 Mu g per lane. Blocking buffer: 3% nonfat dry milk in TBST. Detection: ECL Basic Kit. Exposure time: 10s.



Immunohistochemistry analysis of paraffin-embedded Rat ovary using Beta-Tubulin Mouse mAb (STJ11107557) at dilution of 1:100 (40x lens). High pressure antigen retrieval performed with 0.01M Citrate Buffer (pH 6.0) prior to immunohistochemistry staining.



Immunohistochemistry analysis of paraffin-embedded Rat stomach using Beta-Tubulin Mouse mAb (STJ11107557) at dilution of 1:100 (40x lens). High pressure antigen retrieval performed with 0.01M Citrate Buffer (pH 6.0) prior to immunohistochemistry staining.



Immunofluorescence analysis of C6 cells using Beta-Tubulin Mouse mAb (STJ11107557) at dilution of 1:100 (40x lens). Blue: DAPI for nuclear staining.

This product is suitable for in-vitro studies under the RESEARCH USE ONLY [RUO] licence. This product must not be used as for diagnostic or other medical purposes.
St John's Laboratory Ltd, Knowledge Dock Business Centre, University Way, London, E16 2RD | Tel: 0208 223 3081