

Anti-Alpha-Tubulin antibody [SMM] (STJ11107556)
STJ11107556

GENERAL INFORMATION

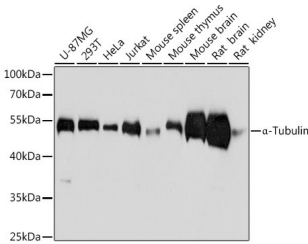
Product Type	Primary antibodies
Short Description	
Applications	WB/IHC-P/IF/ICC/IP/ELISA
Host/Source	Mouse
Reactivity	Human/Mouse/Rat

PRODUCT PROPERTIES

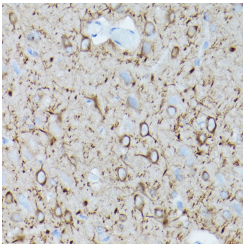
Clonality	Monoclonal
Clone ID	SMM
Concentration	Lot specific
Conjugation	Unconjugated
Purification	Affinity purification
Dilution Range	WB:1:5000-1:10000 IHC-P:1:50-1:200 IF/ICC:1:100-1:200 IP:0.5ug-4ug antibody for 200ug-400ug extracts of whole cells ELISA:Recommended starting concentration is 1 Mu g/mL. Please optimize the concentration based on your specific assay
Formulation	PBS with 0.02% Sodium Azide, 1% BSA, 50% Glycerol, pH 7.3.
Isotype	IgG1
Storage Instruction	

TARGET INFORMATION

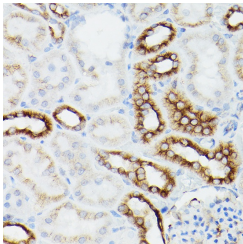
Gene ID	7277
Gene Symbol	TUBA4A
Uniprot ID	TBA4A_HUMAN
Immunogen	
Immunogen Region	
Specificity	Recombinant protein of human Alpha-Tubulin
Immunogen Sequence	



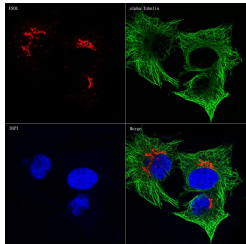
Western blot analysis of various lysates using Alpha-Tubulin Mouse mAb (STJ11107556) at 1:5000 dilution. Secondary antibody: HRP-conjugated Goat anti-Mouse IgG (H+L) (STJS000854) at 1:10000 dilution. Lysates/proteins: 25 Mu g per lane. Blocking buffer: 3% nonfat dry milk in TBST. Detection: ECL Basic Kit. Exposure time: 5s.



Immunohistochemistry analysis of paraffin-embedded Mouse brain using Alpha-Tubulin Mouse mAb (STJ11107556) at dilution of 1:100 (40x lens). High pressure antigen retrieval performed with 0.01M Citrate Buffer (pH 6.0) prior to immunohistochemistry staining.



Immunohistochemistry analysis of paraffin-embedded Mouse kidney using Alpha-Tubulin Mouse mAb (STJ11107556) at dilution of 1:100 (40x lens). High pressure antigen retrieval performed with 0.01M Citrate Buffer (pH 6.0) prior to immunohistochemistry staining.



Confocal imaging of HeLa cells using Alpha-Tubulin Mouse mAb (STJ11107556, dilution 1:200) (Green). The cells were counterstained with US01A Rabbit mAb (STJ245920, dilution 1:100) (Red). DAPI was used for nuclear staining (blue). Objective: 60x.

This product is suitable for in-vitro studies under the RESEARCH USE ONLY [RUO] licence. This product must not be used as for diagnostic or other medical purposes.
St John's Laboratory Ltd, Knowledge Dock Business Centre, University Way, London, E16 2RD | Tel: 0208 223 3081