

Anti-RNF219 antibody (600 aa) (STJ11107510)

STJ11107510

GENERAL INFORMATION

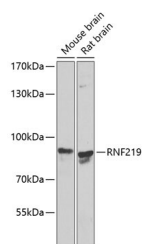
Product Type	Primary antibodies
Short Description	
Applications	WB/ELISA
Host/Source	Rabbit
Reactivity	Human/Mouse/Rat

PRODUCT PROPERTIES

Clonality	Polyclonal
Clone ID	
Concentration	Lot specific
Conjugation	Unconjugated
Purification	Affinity purification
Dilution Range	WB:1:500-1:2000 ELISA:Recommended starting concentration is 1 Mu g/mL. Please optimize the concentration based on your specific assay requirements.
Formulation	PBS with 0.02% Sodium Azide, 50% Glycerol, pH 7.3.
Isotype	IgG
Storage Instruction	

TARGET INFORMATION

Gene ID	79596
Gene Symbol	OBI1
Uniprot ID	OBI1_HUMAN
Immunogen	
Immunogen Region	600 aa
Specificity	A synthetic peptide corresponding to a sequence within amino acids 600 to the C-terminus of human RNF219 (NP_078822.3).
Immunogen Sequence	QLENGSEWKPTSFFLLSPSD QEMNEDFSLHSSSCPVTNEI KPPSCLFQTEFSQGILLSSS HRLFEDQRFGSSSLFKMSSEM HSLHNHLQSPWSTSFVPEKR NKNVNVQSTKRKIQSSLSAS PSKATKS



Western blot analysis of various lysates using RNF219 Rabbit pAb (STJ11107510) at 1:1000 dilution.
Secondary antibody: HRP-conjugated Goat anti-Rabbit IgG (H+L) (STJS000858) at 1:10000 dilution.
Lysates/proteins: 25 Mu g per lane.
Blocking buffer: 3% nonfat dry milk in TBST.
Detection: ECL Basic Kit
Exposure time: 90s.

This product is suitable for in-vitro studies under the RESEARCH USE ONLY [RUO] licence. This product must not be used as for diagnostic or other medical purposes.
St John's Laboratory Ltd, Knowledge Dock Business Centre, University Way, London, E16 2RD | Tel: 0208 223 3081