

Anti-CXCL12 antibody (22-89) (STJ111073)

STJ111073

GENERAL INFORMATION

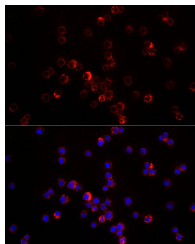
Product Type	Primary antibodies
Short Description	
Applications	WB/IHC-P/IF/ICC/ELISA
Host/Source	Rabbit
Reactivity	Human/Mouse/Rat

PRODUCT PROPERTIES

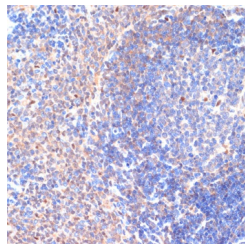
Clonality	Polyclonal
Clone ID	
Concentration	Lot specific
Conjugation	Unconjugated
Purification	Affinity purification
Dilution Range	WB:1:500-1:1000 IHC-P:1:100-1:200 IF/ICC:1:100-1:200 ELISA:Recommended starting concentration is 1 µg/mL. Please optimize the concentration based on your specific assay requirements.
Formulation	PBS with 0.02% Sodium Azide, 50% Glycerol, pH 7.3.
Isotype	IgG
Storage Instruction	Store at -20°C for up to 1 year from the date of receipt, and avoid repeat freeze-thaw cycles.

TARGET INFORMATION

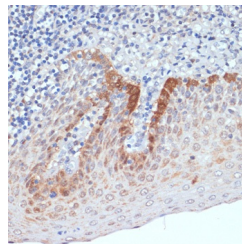
Gene ID	6387
Gene Symbol	CXCL12
Uniprot ID	SDF1_HUMAN
Immunogen	22-89
Immunogen Region	
Specificity	A synthetic peptide corresponding to a sequence within amino acids 40-93 of human CXCL12 (NP_000600.1).
Immunogen Sequence	ARANVKHLKILNTPNCALQI VARLKNNNRQVCIDPKLKI QEYLEKALNKRFKM



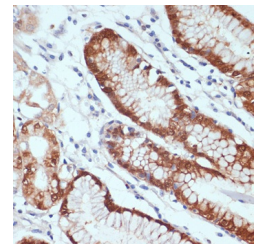
Immunofluorescence analysis of THP-1 cells using CXCL12 antibody (STJ111073) at dilution of 1:200. Blue: DAPI for nuclear staining.



Immunohistochemistry analysis of paraffin-embedded rat spleen using CXCL12 antibody (STJ111073) at dilution of 1:100 (40x lens). Perform microwave antigen retrieval with 10 mM PBS buffer pH 7.2 before commencing with immunohistochemistry staining protocol.



Immunohistochemistry analysis of paraffin-embedded human tonsil using CXCL12 antibody (STJ111073) at dilution of 1:100 (40x lens). Perform microwave antigen retrieval with 10 mM PBS buffer pH 7.2 before commencing with immunohistochemistry staining protocol.



Immunohistochemistry analysis of paraffin-embedded human stomach using CXCL12 antibody (STJ111073) at dilution of 1:100 (40x lens). Perform microwave antigen retrieval with 10 mM PBS buffer pH 7.2 before commencing with immunohistochemistry staining protocol.