

Anti-STING/TMEM173 antibody (254-379 aa) (STJ11107399)

STJ11107399

GENERAL INFORMATION

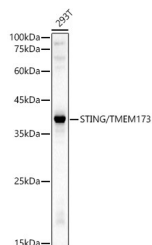
Product Type	Primary antibodies
Short Description	
Applications	WB/IF/ICC/ELISA
Host/Source	Rabbit
Reactivity	Human/Mouse/Rat

PRODUCT PROPERTIES

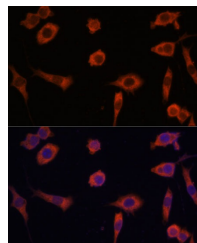
Clonality	Polyclonal
Clone ID	
Concentration	Lot specific
Conjugation	Unconjugated
Purification	Affinity purification
Dilution Range	WB:1:1000-1:5000 IF/ICC:1:50-1:100 ELISA:Recommended starting concentration is 1 µg/mL. Please optimize the concentration based on your specific assay requirements.
Formulation	PBS with 0.02% Sodium Azide, 50% Glycerol, pH 7.3.
Isotype	IgG
Storage Instruction	

TARGET INFORMATION

Gene ID	340061
Gene Symbol	STING1
Uniprot ID	STING_HUMAN
Immunogen	
Immunogen Region	254-379 aa
Specificity	Recombinant fusion protein containing a sequence corresponding to amino acids 254-379 of human STING/TMEM173 (NP_938023.1).
Immunogen Sequence	AGTCVLEYATPLQTLFAMSQ YSQAGFSREDRLQAKLFCR TLEDILADAPESQNNCRLLA YQEPADDSSFSLSQEVLRLH RQEEKEEVTGSLKTSAPVS TSTMSQEPellisGMEKPLP LRTDFS



Western blot analysis of lysates from 293T cells, using STING/TMEM173 Rabbit pAb (STJ11107399) at 1:3000 dilution.
Secondary antibody: HRP-conjugated Goat anti-Rabbit IgG (H+L) (STJS000856) at 1:10000 dilution.
Lysates/proteins: 25 µg per lane.
Blocking buffer: 3% nonfat dry milk in TBST.
Detection: ECL Basic Kit
Exposure time: 10s.



Immunofluorescence analysis of L929 cells using STING/TMEM173 Rabbit pAb (STJ11107399) at dilution of 1:100. Secondary antibody: Cy3-conjugated Goat anti-Rabbit IgG (H+L) (STJS001166) at 1:500 dilution.
Blue: DAPI for nuclear staining.

This product is suitable for in-vitro studies under the RESEARCH USE ONLY [RUO] licence. This product must not be used as for diagnostic or other medical purposes.
St John's Laboratory Ltd, Knowledge Dock Business Centre, University Way, London, E16 2RD | Tel: 0208 223 3081