

Anti-E-Cadherin antibody [SMM] (STJ11107397)

STJ11107397

GENERAL INFORMATION

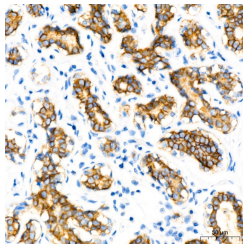
Product Type	Primary antibodies
Short Description	
Applications	IHC-P/ELISA
Host/Source	Mouse
Reactivity	Human/Mouse/Rat

PRODUCT PROPERTIES

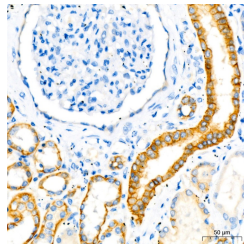
Clonality	Monoclonal
Clone ID	SMM
Concentration	Lot specific
Conjugation	Unconjugated
Purification	Protein A purified
Dilution Range	IHC-P:1:50-1:200 ELISA:Recommended starting concentration is 1 µg/mL. Please optimize the concentration based on your specific assay requirements.
Formulation	PBS with 0.05% Sodium Azide, 0.2% BSA, 40% Glycerol, pH 7.4.
Isotype	IgG1k
Storage Instruction	

TARGET INFORMATION

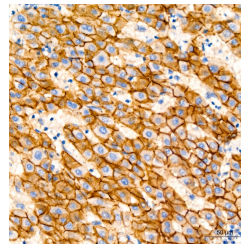
Gene ID	12550
Gene Symbol	Cdh1
Uniprot ID	CADH1_MOUSE
Immunogen	
Immunogen Region	
Specificity	Recombinant protein of mouse E-Cadherin.
Immunogen Sequence	



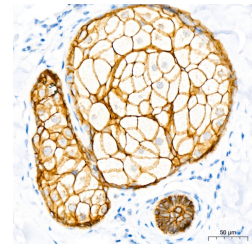
Immunohistochemistry analysis of paraffin-embedded human breast tissue using E-cadherin mouse mAb (STJ11107397) at a dilution of 1:200 (40x lens). Microwave antigen retrieval performed with 0.01M Tris-EDTA Buffer (pH 9.0) prior to immunohistochemistry staining.



Immunohistochemistry analysis of paraffin-embedded human kidney tissue using E-cadherin mouse mAb (STJ11107397) at a dilution of 1:200 (40x lens). Microwave antigen retrieval performed with 0.01M Tris-EDTA Buffer (pH 9.0) prior to immunohistochemistry staining.



Immunohistochemistry analysis of paraffin-embedded human liver tissue using E-cadherin mouse mAb (STJ11107397) at a dilution of 1:200 (40x lens). Microwave antigen retrieval performed with 0.01M Tris-EDTA Buffer (pH 9.0) prior to immunohistochemistry staining.



Immunohistochemistry analysis of paraffin-embedded human skin tissue using E-cadherin mouse mAb (STJ11107397) at a dilution of 1:200 (40x lens). Microwave antigen retrieval performed with 0.01M Tris-EDTA Buffer (pH 9.0) prior to immunohistochemistry staining.

This product is suitable for in-vitro studies under the RESEARCH USE ONLY [RUO] licence. This product must not be used as for diagnostic or other medical purposes.
St John's Laboratory Ltd, Knowledge Dock Business Centre, University Way, London, E16 2RD | Tel: 0208 223 3081