

Anti-FSH antibody (25-116 aa) [SRM] (STJ11107389)

STJ11107389

GENERAL INFORMATION

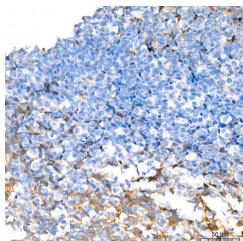
Product Type	Primary antibodies
Short Description	
Applications	IHC-P/ELISA
Host/Source	Rabbit
Reactivity	Human/Mouse

PRODUCT PROPERTIES

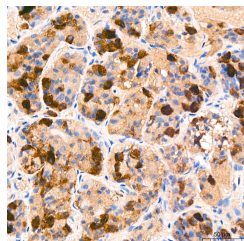
Clonality	Monoclonal
Clone ID	SRM
Concentration	Lot specific
Conjugation	Unconjugated
Purification	Affinity purification
Dilution Range	IHC-P:1:200-1:400 ELISA:Recommended starting concentration is 1 µg/mL. Please optimize the concentration based on your specific assay requirements.
Formulation	PBS with 0.09% Sodium Azide, 0.05% BSA, 50% Glycerol, pH 7.3.
Isotype	IgG
Storage Instruction	

TARGET INFORMATION

Gene ID	1081 2488
Gene Symbol	CGA FSHB
Uniprot ID	GLHA_HUMAN FSHB_HUMAN
Immunogen	
Immunogen Region	25-116 aa
Specificity	Recombinant fusion protein containing a sequence corresponding to amino acids 25-116 of human FSH alpha/beta (NP_000726.1/NP_000501.1).
Immunogen Sequence	APDVQDCPECTLQENPFSSQ PGAPILQCMGCCFSRAYPTP LRSKKTMLVQKNVTSESTCC VAKSYNRVTVMGGFKVENHT ACHCSTCYHHKS



Immunohistochemistry analysis of paraffin-embedded Mouse pituitary tissue using FSH Rabbit mAb (STJ11107389) at a dilution of 1:200 (40x lens). High pressure antigen retrieval performed with 0.01M Tris-EDTA Buffer (pH 9.0) prior to immunohistochemistry staining.



Immunohistochemistry analysis of paraffin-embedded Human pituitary gland tissue using FSH Rabbit mAb (STJ11107389) at a dilution of 1:200 (40x lens). High pressure antigen retrieval performed with 0.01M Tris-EDTA Buffer (pH 9.0) prior to immunohistochemistry staining.