

## Anti-RIP3 antibody (1-287 aa) [SRM] (STJ11107387)

STJ11107387

### GENERAL INFORMATION

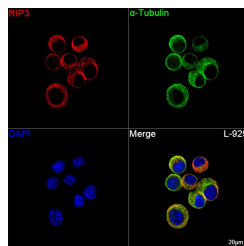
<b>Product Type</b>	Primary antibodies
<b>Short Description</b>	
<b>Applications</b>	IF/ICC/ELISA
<b>Host/Source</b>	Rabbit
<b>Reactivity</b>	Mouse

### PRODUCT PROPERTIES

<b>Clonality</b>	Monoclonal
<b>Clone ID</b>	SRM
<b>Concentration</b>	Lot specific
<b>Conjugation</b>	Unconjugated
<b>Purification</b>	Affinity purification
<b>Dilution</b>	IF/ICC:1:100-1:400
<b>Range</b>	ELISA:Recommended starting concentration is 1 µg/mL. Please optimize the concentration based on your specific assay requirements.
<b>Formulation</b>	PBS with 0.09% Sodium Azide, 0.05% BSA, 50% Glycerol, pH 7.3.
<b>Isotype</b>	IgG
<b>Storage</b>	
<b>Instruction</b>	

### TARGET INFORMATION

<b>Gene ID</b>	11035
<b>Gene Symbol</b>	RIPK3
<b>Uniprot ID</b>	RIPK3_HUMAN
<b>Immunogen</b>	
<b>Immunogen Region</b>	1-287 aa
<b>Specificity</b>	Recombinant Protein corresponding to a sequence within amino acids 1-287 of human RIP3 (NP_006862.2).
<b>Immunogen Sequence</b>	MSCVKLWPSGAPAPLVSIEE LENQELVGKGGFGTVFRAQH RKWGYDVAVKIVNSKAISRE VKAMASLDNEFVLRLEGVIE KVNWDQDPKPALVTKFMENG SLGLLQSQCPRPWPLLRL LKEVVLGMFYLDQNPVLLH RDLKPSNVLLDPELHVKLAD FGLSTFQGGSQSGTGSGEPPG GTLGYLAPELFVNVRKAST ASDVYSFGILMWAVLAGREV ELPTPSLVYEAVCNQRNR



Confocal imaging of L-929 cells using RIP3 Rabbit mAb (STJ11107387, dilution 1:200) followed by a further incubation with Cy3 Goat Anti-Rabbit IgG (H+L) (STJS001166, dilution 1:500) (Red). The cells were counterstained with  $\alpha$ -Tubulin Mouse mAb (STJ11107556, dilution 1:400) followed by incubation with AB00A@ 488-conjugated Goat Anti-Mouse IgG (H+L) antibody (STJS001209, dilution 1:500) (Green). DAPI was used for nuclear staining (Blue). Objective: 100x.

This product is suitable for in-vitro studies under the RESEARCH USE ONLY [RUO] licence. This product must not be used as for diagnostic or other medical purposes.  
St John's Laboratory Ltd, Knowledge Dock Business Centre, University Way, London, E16 2RD | Tel: 0208 223 3081