

**Anti-Calreticulin antibody (18-203 aa) [SMM] (STJ11107378)**  
STJ11107378

**GENERAL INFORMATION**

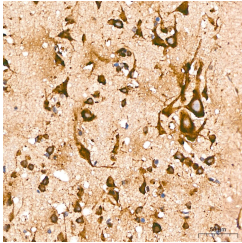
<b>Product Type</b>	Primary antibodies
<b>Short Description</b>	
<b>Applications</b>	WB/IHC-P/IF/ICC/ELISA
<b>Host/Source</b>	Mouse
<b>Reactivity</b>	Human/Mouse/Rat

**PRODUCT PROPERTIES**

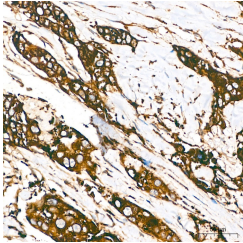
<b>Clonality</b>	Monoclonal
<b>Clone ID</b>	SMM
<b>Concentration</b>	Lot specific
<b>Conjugation</b>	Unconjugated
<b>Purification</b>	Affinity purification
<b>Dilution</b>	WB:1:2500-1:10000
<b>Range</b>	IHC-P:1:200-1:2000 IF/ICC:1:200-1:800 ELISA:Recommended starting concentration is 1 µg/mL. Please optimize the concentration based on your specific assay requirements.
<b>Formulation</b>	PBS with 0.09% Sodium Azide, 0.05% BSA, 50% Glycerol, pH 7.3.
<b>Isotype</b>	IgG
<b>Storage</b>	
<b>Instruction</b>	

**TARGET INFORMATION**

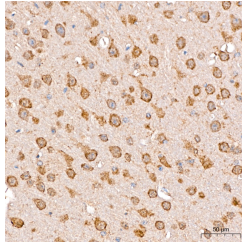
<b>Gene ID</b>	811
<b>Gene Symbol</b>	CALR
<b>Uniprot ID</b>	CALR_HUMAN
<b>Immunogen</b>	
<b>Immunogen Region</b>	18-203 aa
<b>Specificity</b>	Recombinant fusion protein containing a sequence corresponding to amino acids 18-203 of human Calreticulin (NP_004334.1)
<b>Immunogen Sequence</b>	EPAVYFKEQFLDGDGWTSRW IESKHKSDFGKFLSSGKFY GDEEKDKGLQTSQDARFYAL SASFEPFSNKGQTLVVQFTV KHEQNIDCGGGYVKLPNSL DQTDMHGDSEYNIMFGPDIC GPGTKKVHVIFNYKGKNVLI NKDIRCKDDEFTHLYTLVR PDNTYEVKIDNSQVESGSLE DDWDFL



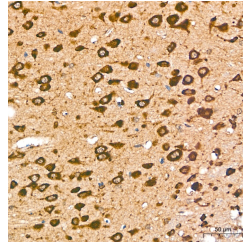
Immunohistochemistry analysis of paraffin-embedded Human brain tissue using Calreticulin Mouse mAb (STJ11107378) at a dilution of 1:200 (40x lens). High pressure antigen retrieval performed with 0.01M Citrate Buffer (pH 6.0) prior to immunohistochemistry staining.



Immunohistochemistry analysis of paraffin-embedded Human breast cancer tissue using Calreticulin Mouse mAb (STJ11107378) at a dilution of 1:200 (40x lens). High pressure antigen retrieval performed with 0.01M Citrate Buffer (pH 6.0) prior to immunohistochemistry staining.



Immunohistochemistry analysis of paraffin-embedded Mouse brain tissue using Calreticulin Mouse mAb (STJ11107378) at a dilution of 1:200 (40x lens). High pressure antigen retrieval performed with 0.01M Citrate Buffer (pH 6.0) prior to immunohistochemistry staining.



Immunohistochemistry analysis of paraffin-embedded Rat brain tissue using Calreticulin Mouse mAb (STJ11107378) at a dilution of 1:200 (40x lens). High pressure antigen retrieval performed with 0.01M Citrate Buffer (pH 6.0) prior to immunohistochemistry staining.

This product is suitable for in-vitro studies under the RESEARCH USE ONLY [RUO] licence. This product must not be used as for diagnostic or other medical purposes.  
St John's Laboratory Ltd, Knowledge Dock Business Centre, University Way, London, E16 2RD | Tel: 0208 223 3081