

## Anti-CD24 antibody (1-80 aa) [SRM] (STJ11107374)

STJ11107374

### GENERAL INFORMATION

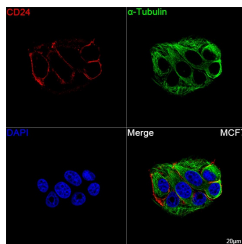
<b>Product Type</b>	Primary antibodies
<b>Short Description</b>	
<b>Applications</b>	IF/ICC/ELISA
<b>Host/Source</b>	Rabbit
<b>Reactivity</b>	Human

### PRODUCT PROPERTIES

<b>Clonality</b>	Monoclonal
<b>Clone ID</b>	SRM
<b>Concentration</b>	Lot specific
<b>Conjugation</b>	Unconjugated
<b>Purification</b>	Affinity purification
<b>Dilution Range</b>	IF/ICC: 1:200-1:2000 ELISA: Recommended starting concentration is 1 µg/mL. Please optimize the concentration based on your specific assay requirements.
<b>Formulation</b>	PBS with 0.09% Sodium Azide, 0.05% BSA, 50% Glycerol, pH 7.3.
<b>Isotype</b>	IgG
<b>Storage Instruction</b>	

### TARGET INFORMATION

<b>Gene ID</b>	100133941
<b>Gene Symbol</b>	CD24
<b>Uniprot ID</b>	CD24_HUMAN
<b>Immunogen</b>	
<b>Immunogen Region</b>	1-80 aa
<b>Specificity</b>	A synthetic peptide corresponding to a sequence within amino acids 1-80 of human CD24 (NP_037362.1).
<b>Immunogen Sequence</b>	MGRAMVARLGLGLLLALLL PTQIYSSETTTGTSSNSSQS TSNSGLAPNPTNATTKAAGG ALQSTASLFVWSLSLLHLYS



Confocal imaging of MCF7 cells using CD24 Rabbit mAb (STJ11107374, dilution 1:200) followed by a further incubation with Cy3 Goat Anti-Rabbit IgG (H+L) (STJS001166, dilution 1:500) (Red). The cells were counterstained with  $\alpha$ -Tubulin Mouse mAb (STJ11107556, dilution 1:400) followed by incubation with AF648-conjugated Goat Anti-Mouse IgG (H+L) antibody (STJS001209, dilution 1:500) (Green). DAPI was used for nuclear staining (Blue). Objective: 100x.

This product is suitable for in-vitro studies under the RESEARCH USE ONLY [RUO] licence. This product must not be used as for diagnostic or other medical purposes.  
St John's Laboratory Ltd, Knowledge Dock Business Centre, University Way, London, E16 2RD | Tel: 0208 223 3081