

Anti-CD364/PI16 antibody (30-210 aa) [SRM] (STJ11107371)

STJ11107371

GENERAL INFORMATION

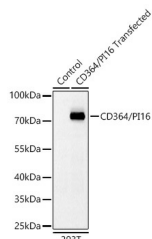
Product Type	Primary antibodies
Short Description	
Applications	WB/ELISA
Host/Source	Rabbit
Reactivity	Mouse

PRODUCT PROPERTIES

Clonality	Monoclonal
Clone ID	SRM
Concentration	Lot specific
Conjugation	Unconjugated
Purification	Affinity purification
Dilution	WB:1:1000-1:6000
Range	ELISA:Recommended starting concentration is 1 Mu g/mL. Please optimize the concentration based on your specific assay requirements.
Formulation	PBS with 0.09% Sodium Azide, 0.05% BSA, 50% Glycerol, pH 7.3.
Isotype	IgG
Storage	
Instruction	

TARGET INFORMATION

Gene ID	74116
Gene Symbol	Pi16
Uniprot ID	P116_MOUSE
Immunogen	
Immunogen Region	30-210 aa
Specificity	Recombinant fusion protein containing a sequence corresponding to amino acids 30-210 of mouse CD364/PI16 (NP_076223.3). LTEDEKQTMVDLHNQYRAQV SPPASDMLQMRWDELAFA KAYAQKCVWGHNKERRRGE NLFAITDEGMDVPLAVGNWH
Immunogen Sequence	EEHEYNFSTATCDPNQMC G HYTVVWSKTERIGCGSHFC ETLQGVVEANIHLVLCNYEP PGNVKGKRPYQEGTPCSQCP LGYSCENSLCEPMRNPEKAQ D



Western blot analysis of lysates from wild type (WT) and 293T cells transfected with CD364/PI16 using CD364/PI16 Rabbit mAb (STJ11107371) at 1:1000 dilution incubated overnight at 4°C. Secondary antibody: HRP-conjugated Goat anti-Rabbit IgG (H+L) (STJS000856) at 1:10000 dilution. Lysates/proteins: 20 Mu g per lane. Blocking buffer: 3% nonfat dry milk in TBST. Detection: ECL Basic Kit (Exposure time: 10s).

This product is suitable for in-vitro studies under the RESEARCH USE ONLY [RUO] licence. This product must not be used as for diagnostic or other medical purposes.
St John's Laboratory Ltd, Knowledge Dock Business Centre, University Way, London, E16 2RD | Tel: 0208 223 3081