

Anti-C3AR1 antibody (1-100 aa) [SRM] (STJ11107367)

STJ11107367

GENERAL INFORMATION

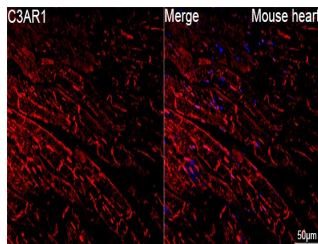
Product Type	Primary antibodies
Short Description	
Applications	IF/ICC/ELISA
Host/Source	Rabbit
Reactivity	Mouse

PRODUCT PROPERTIES

Clonality	Monoclonal
Clone ID	SRM
Concentration	Lot specific
Conjugation	Unconjugated
Purification	Affinity purification
Dilution Range	IF/ICC:1:200-1:800 ELISA:Recommended starting concentration is 1 Mu g/mL. Please optimize the concentration based on your specific assay requirements.
Formulation	PBS with 0.09% Sodium Azide, 0.05% BSA, 50% Glycerol, pH 7.3.
Isotype	IgG
Storage Instruction	

TARGET INFORMATION

Gene ID	719
Gene Symbol	C3AR1
Uniprot ID	C3AR_HUMAN
Immunogen	
Immunogen Region	1-100 aa
Specificity	A synthetic peptide corresponding to a sequence within amino acids 1-100 of human C3AR1 (NP_004045.1).
Immunogen Sequence	MASFSAETNSTDLLSQPWNE PPVILSMVILSLTFLGLPG NGLVLVWVAGLKMQRVTNTIW FLHLTLADLLCCLSLPFSLA HLALQGQWPYGRFLCKLIPS



Confocal imaging of paraffin-embedded Mouse heart tissue using C3AR1 Rabbit mAb (STJ11107367, dilution 1:200) followed by a further incubation with Cy3 Goat Anti-Rabbit IgG (H+L) (STJS001166, dilution 1:500) (Red). DAPI was used for nuclear staining (Blue). High pressure antigen retrieval performed with 0.01M Citrate Buffer (pH 6.0) prior to IF staining. Objective: 40x.

This product is suitable for in-vitro studies under the RESEARCH USE ONLY [RUO] licence. This product must not be used as for diagnostic or other medical purposes.
St John's Laboratory Ltd, Knowledge Dock Business Centre, University Way, London, E16 2RD | Tel: 0208 223 3081