

Anti-HLA-DPB1 antibody (1-100 aa) [SRM] (STJ11107363)
STJ11107363

GENERAL INFORMATION

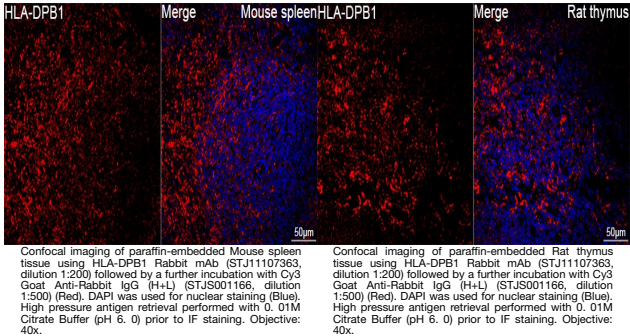
Product Type	Primary antibodies
Short Description	
Applications	IF/ICC/ELISA
Host/Source	Rabbit
Reactivity	Mouse/Rat

PRODUCT PROPERTIES

Clonality	Monoclonal
Clone ID	SRM
Concentration	Lot specific
Conjugation	Unconjugated
Purification	Affinity purification
Dilution Range	IF/ICC:1:200-1:800 ELISA:Recommended starting concentration is 1 Mu g/mL. Please optimize the concentration based on your specific assay requirements.
Formulation	PBS with 0.09% Sodium Azide, 0.05% BSA, 50% Glycerol, pH 7.3.
Isotype	IgG
Storage	
Instruction	

TARGET INFORMATION

Gene ID	3115
Gene Symbol	HLA-DPB1
Uniprot ID	DPB1_HUMAN
Immunogen	
Immunogen	1-100 aa
Region	
Specificity	A synthetic peptide corresponding to a sequence within amino acids 1-100 of human HLA-DPB1 (NP_002112.3).
Immunogen	MMVLQVSAAPRTVALTALLM VLLTSVQGRATPENLYFQG RQECYAFNGTQRFLERYIYN REEFARFDSVDVGEFRAVTEL
Sequence	GRPAEYWNSQKDILEEKRA



This product is suitable for in-vitro studies under the RESEARCH USE ONLY [RUO] licence. This product must not be used as for diagnostic or other medical purposes.
St John's Laboratory Ltd, Knowledge Dock Business Centre, University Way, London, E16 2RD | Tel: 0208 223 3081