

Anti-Recoverin antibody (1-200 aa) [SRM] (STJ11107356)

STJ11107356

GENERAL INFORMATION

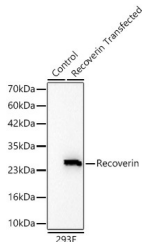
Product Type	Primary antibodies
Short Description	
Applications	WB/ELISA
Host/Source	Rabbit
Reactivity	Human

PRODUCT PROPERTIES

Clonality	Monoclonal
Clone ID	SRM
Concentration	Lot specific
Conjugation	Unconjugated
Purification	Affinity purification
Dilution	WB:1:2000-1:8000
Range	ELISA:Recommended starting concentration is 1 Mu g/mL. Please optimize the concentration based on your specific assay requirements.
Formulation	PBS with 0.09% Sodium Azide, 0.05% BSA, 50% Glycerol, pH 7.3.
Isotype	IgG
Storage	
Instruction	

TARGET INFORMATION

Gene ID	5957
Gene Symbol	RCVRN
Uniprot ID	RECO_HUMAN
Immunogen	
Immunogen Region	1-200 aa
Specificity	Recombinant fusion protein containing a sequence corresponding to amino acids 1-200 of human Recoverin (NP_002894.1).
Immunogen Sequence	MGNSKSGALSKIELEELQLN TKFSEEEELCSWYQSFLKDCP TGRITQQQFQSIYAKFFPDT DPKAYAQHVFRSFDNSLDGT LDFKEYVIALHMTTAGKTNQ KLEWAFSLYDVGNGTISKV EVLEIVMAIFKMITPEDVKL LPDDENTPEKRAEKIWKYFG KNDDDKLTEKEFIEGTLANK EILRLIQFEPQKVKEKMKNA



Western blot analysis of lysates from wild type (WT) and 293F cells transfected with Recoverin using Recoverin Rabbit mAb (STJ11107356) at 1:2000 dilution incubated overnight at 4°C.
Secondary antibody: HRP-conjugated Goat anti-Rabbit IgG (H+L) (STJS000856) at 1:10000 dilution.
Lysates/proteins: 20 Mu g per lane.
Blocking buffer: 3% nonfat dry milk in TBST.
Detection: ECL Basic Kit (Exposure time: 30s).

This product is suitable for in-vitro studies under the RESEARCH USE ONLY [RUO] licence. This product must not be used as for diagnostic or other medical purposes.
St John's Laboratory Ltd, Knowledge Dock Business Centre, University Way, London, E16 2RD | Tel: 0208 223 3081