

## Anti-IL-2RB antibody (27-235 aa) [SRM] (STJ11107355)

STJ11107355

### GENERAL INFORMATION

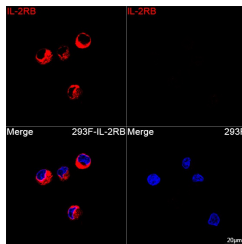
<b>Product Type</b>	Primary antibodies
<b>Short Description</b>	
<b>Applications</b>	IF/ICC/ELISA
<b>Host/Source</b>	Rabbit
<b>Reactivity</b>	Mouse

### PRODUCT PROPERTIES

<b>Clonality</b>	Monoclonal
<b>Clone ID</b>	SRM
<b>Concentration</b>	Lot specific
<b>Conjugation</b>	Unconjugated
<b>Purification</b>	Affinity purification
<b>Dilution</b>	IF/ICC:1:200-1:2000
<b>Range</b>	ELISA:Recommended starting concentration is 1 Mu g/mL. Please optimize the concentration based on your specific assay requirements.
<b>Formulation</b>	PBS with 0.09% Sodium Azide, 0.05% BSA, 50% Glycerol, pH 7.3.
<b>Isotype</b>	IgG
<b>Storage</b>	
<b>Instruction</b>	

### TARGET INFORMATION

<b>Gene ID</b>	16185
<b>Gene Symbol</b>	Il2rb
<b>Uniprot ID</b>	IL2RB_MOUSE
<b>Immunogen</b>	
<b>Immunogen Region</b>	27-235 aa
<b>Specificity</b>	Recombinant fusion protein containing a sequence corresponding to amino acids 27-235 of mouse IL-2RB (NP_032394.1).
<b>Immunogen Sequence</b>	AVKNCSHLECFYNSRANVSC MWSHEEALNVTTCVHAKSN LRHWNKTCELTVRQASWAC NLILGSFPESQSLTSVDLLD INNVCEEKGGWRRVKTCDHF PFDNLRLVAPHSLQVLHIDT QRCNISWKVQSVSHYIEPYL EFEARRRLGHGWEDASVLS LKQRQQWLFLEMLIPSTSYE VQVRVKAQRNNTGTWSPWSQ PLTFRTRPA



Confocal imaging of 293F cells transfected with IL-2RB using IL-2RB Rabbit mAb (STJ11107355, dilution 1:200) followed by a further incubation with Cy3 Goat Anti-Rabbit IgG (H+L) (STJS001166, dilution 1:500) (Red). DAPI was used for nuclear staining (Blue). Objective: 100x.

This product is suitable for in-vitro studies under the RESEARCH USE ONLY [RUO] licence. This product must not be used as for diagnostic or other medical purposes.  
St John's Laboratory Ltd, Knowledge Dock Business Centre, University Way, London, E16 2RD | Tel: 0208 223 3081