

Anti-BNIP3L antibody (1-187 aa) [SRM] (STJ11107337)

STJ11107337

GENERAL INFORMATION

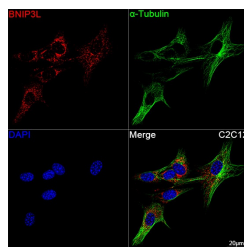
Product Type	Primary antibodies
Short Description	
Applications	IF/ICC/ELISA
Host/Source	Rabbit
Reactivity	Mouse

PRODUCT PROPERTIES

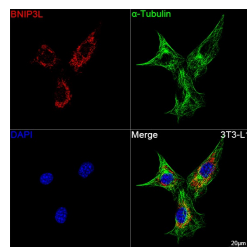
Clonality	Monoclonal
Clone ID	SRM
Concentration	Lot specific
Conjugation	Unconjugated
Purification	Affinity purification
Dilution	IF/ICC:1:100-1:400
Range	ELISA:Recommended starting concentration is 1 µg/mL. Please optimize the concentration based on your specific assay requirements.
Formulation	PBS with 0.09% Sodium Azide, 0.05% BSA, 50% Glycerol, pH 7.3.
Isotype	IgG
Storage	
Instruction	

TARGET INFORMATION

Gene ID	665
Gene Symbol	BNIP3L
Uniprot ID	BNI3L_HUMAN
Immunogen	
Immunogen Region	1-187 aa
Specificity	Recombinant fusion protein containing a sequence corresponding to amino acids 1-187 of human BNIP3L (NP_004322.1).
Immunogen Sequence	MSSHLVEPPPLHNNNNNCE ENEQSLPPPAGLNSSWVLP MNSSNGNDNGKNGGLEHV PSSSSIHNGDMEKILLDAQH ESGQSSSRGSSHCDSPPQEQ DGQIMFDVEMHTSRDHSSQS EEEVVEGEKEVEALKKSADW VSDWSSRPENIPPEFHFRRH PKRSVLSMRKSGAMKKGKI FSAEFLK



Confocal imaging of C2C12 cells using BNIP3L Rabbit mAb (STJ11107337, dilution 1:200) followed by a further incubation with Cy3 Goat Anti-Rabbit IgG (H+L) (STJS001166, dilution 1:500) (Red). The cells were counterstained with AAα-Tubulin Mouse mAb (STJ11107556, dilution 1:400) followed by incubation with ABTbioAb 488-conjugated Goat Anti-Mouse IgG (H+L) antibody (STJS001209, dilution 1:500) (Green). DAPI was used for nuclear staining (Blue). Objective: 100x.



Confocal imaging of 3T3-L1 cells using BNIP3L Rabbit mAb (STJ11107337, dilution 1:200) followed by a further incubation with Cy3 Goat Anti-Rabbit IgG (H+L) (STJS001166, dilution 1:500) (Red). The cells were counterstained with AAα-Tubulin Mouse mAb (STJ11107556, dilution 1:400) followed by incubation with ABTbioAb 488-conjugated Goat Anti-Mouse IgG (H+L) antibody (STJS001209, dilution 1:500) (Green). DAPI was used for nuclear staining (Blue). Objective: 100x.

This product is suitable for in-vitro studies under the RESEARCH USE ONLY [RUO] licence. This product must not be used as for diagnostic or other medical purposes.

St John's Laboratory Ltd, Knowledge Dock Business Centre, University Way, London, E16 2RD | Tel: 0208 223 3081