

Anti-Endomucin antibody (212-261 aa) [SRM] (STJ11107336)

STJ11107336

GENERAL INFORMATION

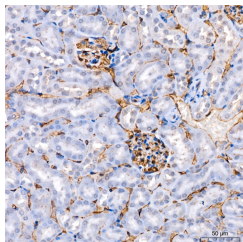
Product Type	Primary antibodies
Short Description	
Applications	IHC-P/ELISA
Host/Source	Rabbit
Reactivity	Mouse

PRODUCT PROPERTIES

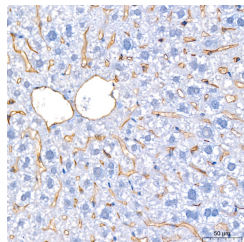
Clonality	Monoclonal
Clone ID	SRM
Concentration	Lot specific
Conjugation	Unconjugated
Purification	Affinity purification
Dilution Range	IHC-P:1:200-1:800 ELISA:Recommended starting concentration is 1 µg/mL. Please optimize the concentration based on your specific assay requirements.
Formulation	PBS with 0.09% Sodium Azide, 0.05% BSA, 50% Glycerol, pH 7.3.
Isotype	IgG
Storage Instruction	

TARGET INFORMATION

Gene ID	51705
Gene Symbol	EMCN
Uniprot ID	MUCEN_HUMAN
Immunogen	
Immunogen Region	212-261 aa
Specificity	Recombinant fusion protein containing a sequence corresponding to amino acids 212-261 of human Endomucin (NP_057326.2).
Immunogen Sequence	LYRMCWKADPGTPENGNDQP QSDKESVKLLTVKTISHESG EHSAGGKTKN



Immunohistochemistry analysis of paraffin-embedded Mouse kidney tissue using Endomucin Rabbit mAb (STJ11107336) at a dilution of 1:300 (40x lens). High pressure antigen retrieval performed with 0.01M Citrate Buffer (pH 6.0) prior to immunohistochemistry staining.



Immunohistochemistry analysis of paraffin-embedded Mouse liver tissue using Endomucin Rabbit mAb (STJ11107336) at a dilution of 1:300 (40x lens). High pressure antigen retrieval performed with 0.01M Citrate Buffer (pH 6.0) prior to immunohistochemistry staining.

This product is suitable for in-vitro studies under the RESEARCH USE ONLY [RUO] licence. This product must not be used as for diagnostic or other medical purposes.
St John's Laboratory Ltd, Knowledge Dock Business Centre, University Way, London, E16 2RD | Tel: 0208 223 3081