

## Anti-EHF antibody (1-113 aa) [SRM] (STJ11107330)

STJ11107330

### GENERAL INFORMATION

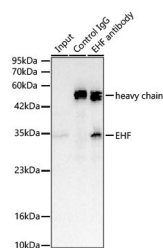
<b>Product Type</b>	Primary antibodies
<b>Short Description</b>	
<b>Applications</b>	IP/ELISA
<b>Host/Source</b>	Rabbit
<b>Reactivity</b>	Human

### PRODUCT PROPERTIES

<b>Clonality</b>	Monoclonal
<b>Clone ID</b>	SRM
<b>Concentration</b>	Lot specific
<b>Conjugation</b>	Unconjugated
<b>Purification</b>	Affinity purification
<b>Dilution Range</b>	IP:0.5 Mu g-4 Mu g antibody for 400 Mu g-600 Mu g extracts of whole cells ELISA:Recommended starting concentration is 1 Mu g/mL. Please optimize the concentration based on your specific assay requirements.
<b>Formulation</b>	PBS with 0.09% Sodium Azide, 0.05% BSA, 50% Glycerol, pH 7.3.
<b>Isotype</b>	IgG
<b>Storage</b>	
<b>Instruction</b>	

### TARGET INFORMATION

<b>Gene ID</b>	26298
<b>Gene Symbol</b>	EHF
<b>Uniprot ID</b>	EHF_HUMAN
<b>Immunogen</b>	
<b>Immunogen Region</b>	1-113 aa
<b>Specificity</b>	Recombinant fusion protein containing a sequence corresponding to amino acids 1-113 of human EHF (NP_036285.2). MILEGGGVMNLNPGNNLLHQ PPAWTDSYSTCNVSSGFFGG QWHEIHPQYWTQYQVWEWLQ HLLDTNQLDANCIPFQEFDI
<b>Immunogen Sequence</b>	NGEHLCSMSLQEFTRAAGTA GQLLYSNLQHLKW



Immunoprecipitation of EHF from 500 Åg extracts of LNCaP cells was performed using 2 Åg of EHF Rabbit mAb (STJ11107330). Rabbit IgG isotype control (STJ11105763) was used to precipitate the Control IgG sample. IP samples were eluted with 1X Laemmli Buffer. The Input lane represents 10% of the total input. Western blot analysis of immunoprecipitates was conducted using EHF Rabbit mAb (A24643) at a dilution of 1 : 1000.

This product is suitable for in-vitro studies under the RESEARCH USE ONLY [RUO] licence. This product must not be used as for diagnostic or other medical purposes.  
St John's Laboratory Ltd, Knowledge Dock Business Centre, University Way, London, E16 2RD | Tel: 0208 223 3081