

## Anti-Fos B antibody (1-100 aa) [SRM] (STJ11107312)

STJ11107312

### GENERAL INFORMATION

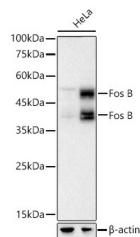
<b>Product Type</b>	Primary antibodies
<b>Short Description</b>	
<b>Applications</b>	WB/ELISA
<b>Host/Source</b>	Rabbit
<b>Reactivity</b>	Human/Rat

### PRODUCT PROPERTIES

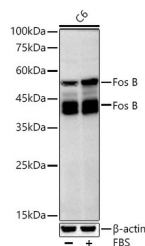
<b>Clonality</b>	Monoclonal
<b>Clone ID</b>	SRM
<b>Concentration</b>	Lot specific
<b>Conjugation</b>	Unconjugated
<b>Purification</b>	Affinity purification
<b>Dilution Range</b>	WB:1:1000-1:4000 ELISA:Recommended starting concentration is 1 Mu g/mL. Please optimize the concentration based on your specific assay requirements.
<b>Formulation</b>	PBS with 0.09% Sodium Azide, 0.05% BSA, 50% Glycerol, pH 7.3.
<b>Isotype</b>	IgG
<b>Storage</b>	
<b>Instruction</b>	

### TARGET INFORMATION

<b>Gene ID</b>	2354
<b>Gene Symbol</b>	FOSB
<b>Uniprot ID</b>	FOSB_HUMAN
<b>Immunogen</b>	
<b>Immunogen Region</b>	1-100 aa
<b>Specificity</b>	A synthetic peptide corresponding to a sequence within amino acids 1-100 of human Fos B (NP_006723.2).
<b>Immunogen Sequence</b>	MFQAFPGDYDSGSRCSPPS AESQYLSSVDSFGSPPTAAA SQECAGLGEMPGSFVPTVTA ITTSQDLQWLQVQPTLISSMA QSQQGPLASQPPVVDPYDMP



Western blot analysis of lysates from HeLa cells using Fos B Rabbit mAb (STJ11107312) at 1:1000 dilution. Cells were treated by PMA/TPA (200 nM) at 37°C for 15 minutes after serum-starvation overnight. Secondary antibody: HRP-conjugated Goat anti-Rabbit IgG (H+L) (STJ5000656) at 1:10000 dilution. Lysates/proteins: 30 Mu g per lane. Blocking buffer: 3 % nonfat dry milk in TBST. Detection: ECL Basic Kit. Exposure time: 20s.



Western blot analysis of lysates from C6 cells using Fos B Rabbit mAb (STJ11107312) at 1:1000 dilution. Cells were incubated overnight at 4°C. C6 cells were treated by 10% FBS at 37°C for 8 hours after serum-starvation overnight. Secondary antibody: (I) at 1:10000 dilution. Lysates/proteins: 30 Mu g per lane. Blocking buffer: 3 % nonfat dry milk in TBST. Detection: (I). Exposure time: 60s.

This product is suitable for in-vitro studies under the RESEARCH USE ONLY [RUO] licence. This product must not be used as for diagnostic or other medical purposes.  
St John's Laboratory Ltd, Knowledge Dock Business Centre, University Way, London, E16 2RD | Tel: 0208 223 3081