

Anti-EGR1 antibody (90-250 aa) [SRM] (STJ11107309)

STJ11107309

GENERAL INFORMATION

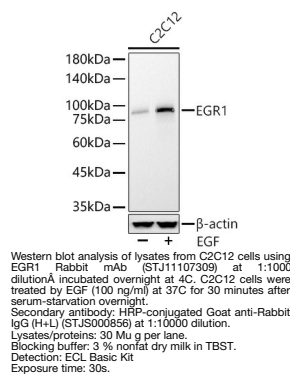
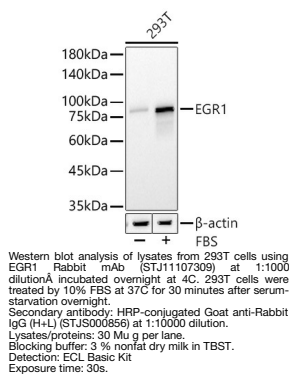
Product Type	Primary antibodies
Short Description	
Applications	WB/ELISA
Host/Source	Rabbit
Reactivity	Human/Mouse

PRODUCT PROPERTIES

Clonality	Monoclonal
Clone ID	SRM
Concentration	Lot specific
Conjugation	Unconjugated
Purification	Affinity purification
Dilution	WB:1:1000-1:4000
Range	ELISA:Recommended starting concentration is 1 Mu g/mL. Please optimize the concentration based on your specific assay requirements.
Formulation	PBS with 0.09% Sodium Azide, 0.05% BSA, 50% Glycerol, pH 7.3.
Isotype	IgG
Storage	
Instruction	

TARGET INFORMATION

Gene ID	1958
Gene Symbol	EGR1
Uniprot ID	EGR1_HUMAN
Immunogen	
Immunogen Region	90-250 aa
Specificity	Recombinant fusion protein containing a sequence corresponding to amino acids 90-250 of human EGR1 (NP_001955.1). ADTGEQPYEHLTAESFPDIS LNNEKVLVETSYPSTTRLP PITYTGRFSLEPAPNSGNTL WPEPLFSLVSLVSMTNPPA
Immunogen Sequence	SSSSAPSPAASSASQSPPLSCAVPSNDSSPIYSAATPF PTPNTDIFPEPQSQAAPGSA GTALQYPPPAYPAAKGGFQV P



This product is suitable for in-vitro studies under the RESEARCH USE ONLY [RUO] licence. This product must not be used as for diagnostic or other medical purposes.
St John's Laboratory Ltd, Knowledge Dock Business Centre, University Way, London, E16 2RD | Tel: 0208 223 3081