

## Anti-GOLGA4 antibody (1-150 aa) [SRM] (STJ11107304)

STJ11107304

### GENERAL INFORMATION

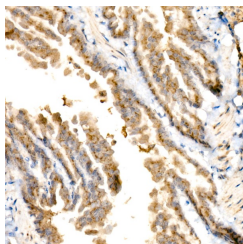
<b>Product Type</b>	Primary antibodies
<b>Short Description</b>	
<b>Applications</b>	IHC-P/ELISA
<b>Host/Source</b>	Rabbit
<b>Reactivity</b>	Human/Mouse/Rat

### PRODUCT PROPERTIES

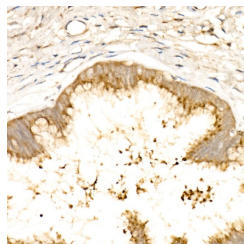
<b>Clonality</b>	Monoclonal
<b>Clone ID</b>	SRM
<b>Concentration</b>	Lot specific
<b>Conjugation</b>	Unconjugated
<b>Purification</b>	Affinity purification
<b>Dilution</b>	IHC-P: 1:100-1:1000
<b>Range</b>	ELISA: Recommended starting concentration is 1 µg/mL. Please optimize the concentration based on your specific assay requirements.
<b>Formulation</b>	PBS with 0.09% Sodium Azide, 0.05% BSA, 50% Glycerol, pH 7.3.
<b>Isotype</b>	IgG
<b>Storage</b>	
<b>Instruction</b>	

### TARGET INFORMATION

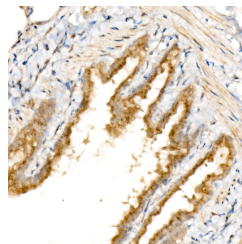
<b>Gene ID</b>	2803
<b>Gene Symbol</b>	GOLGA4
<b>Uniprot ID</b>	GOLGA4_HUMAN
<b>Immunogen</b>	
<b>Immunogen Region</b>	1-150 aa
<b>Specificity</b>	Recombinant fusion protein containing a sequence corresponding to amino acids 1-150 of human GOLGA4 (NP_002069.2).
<b>Immunogen Sequence</b>	MFKKLKQKISEEQQLQQAL APAQASSNSSTPTRMRSRTS SFTEQLDEGTPNRESGDTQS FAQKLQLRVPSVESLFRSPI
<b>Sequence</b>	KESLFRSSSKESLVRTSSRE SLNRLDLSSTASFDPSPDM DSEAEDLVGNDSLNLKEQLI QLRLRMERSL



Immunohistochemistry analysis of paraffin-embedded mouse lung tissue using GOLGA4 Rabbit mAb (STJ11107304) at a dilution of 1:150 (40x lens). High pressure antigen retrieval performed with 0.01M Citrate Buffer (pH 6.0) prior to immunohistochemistry staining.



Immunohistochemistry analysis of paraffin-embedded human cervix tissue using GOLGA4 Rabbit mAb (STJ11107304) at a dilution of 1:150 (40x lens). High pressure antigen retrieval performed with 0.01M Citrate Buffer (pH 6.0) prior to immunohistochemistry staining.



Immunohistochemistry analysis of paraffin-embedded rat lung tissue using GOLGA4 Rabbit mAb (STJ11107304) at a dilution of 1:150 (40x lens). High pressure antigen retrieval performed with 0.01M Citrate Buffer (pH 6.0) prior to immunohistochemistry staining.

This product is suitable for in-vitro studies under the RESEARCH USE ONLY [RUO] licence. This product must not be used as for diagnostic or other medical purposes.  
St John's Laboratory Ltd, Knowledge Dock Business Centre, University Way, London, E16 2RD | Tel: 0208 223 3081