

## Anti-GDNF Receptor alpha 1/GFRA1 antibody (361-460 aa) [SRM] (STJ11107301)

STJ11107301

### GENERAL INFORMATION

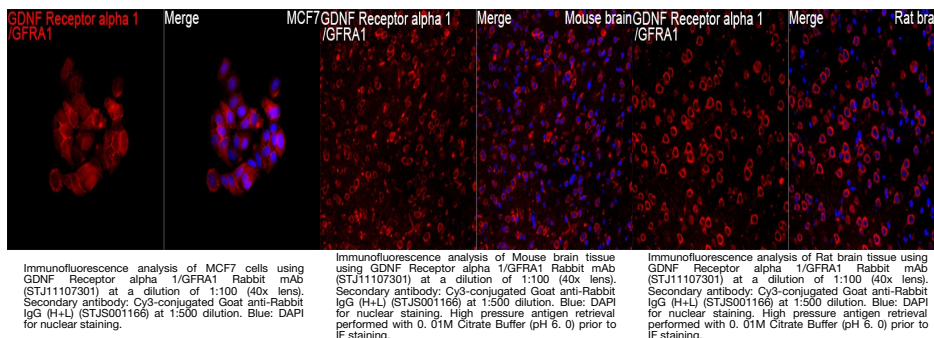
<b>Product Type</b>	Primary antibodies
<b>Short Description</b>	
<b>Applications</b>	IF/ICC/ELISA
<b>Host/Source</b>	Rabbit
<b>Reactivity</b>	Human/Mouse/Rat

### PRODUCT PROPERTIES

<b>Clonality</b>	Monoclonal
<b>Clone ID</b>	SRM
<b>Concentration</b>	Lot specific
<b>Conjugation</b>	Unconjugated
<b>Purification</b>	Affinity purification
<b>Dilution Range</b>	IF/ICC:1:100-1:400 ELISA:Recommended starting concentration is 1 Mu g/mL. Please optimize the concentration based on your specific assay requirements.
<b>Formulation</b>	PBS with 0.09% Sodium Azide, 0.05% BSA, 50% Glycerol, pH 7.3.
<b>Isotype</b>	IgG
<b>Storage Instruction</b>	

### TARGET INFORMATION

<b>Gene ID</b>	2674
<b>Gene Symbol</b>	GFRA1
<b>Uniprot ID</b>	GFRA1_HUMAN
<b>Immunogen</b>	
<b>Immunogen Region</b>	361-460 aa
<b>Specificity</b>	A synthetic peptide corresponding to a sequence within amino acids 361-460 of human GDNF Receptor alpha 1/GFRA1 (NP_005255.1).
<b>Immunogen Sequence</b>	QTTTATTTTALRVKNKPLGP AGSENIPTHTVLPPCANLQA QKLKSNVSGNTHLCISNGNY EKEGLGASSHITTKSMAAPP SCGLSPLLVLVTALSTLLS



This product is suitable for in-vitro studies under the RESEARCH USE ONLY [RUO] licence. This product must not be used as for diagnostic or other medical purposes.  
St John's Laboratory Ltd, Knowledge Dock Business Centre, University Way, London, E16 2RD | Tel: 0208 223 3081