

Anti-ELN antibody (27-200 aa) [SRM] (STJ11107291)

STJ11107291

GENERAL INFORMATION

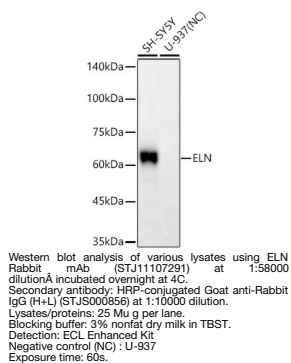
Product Type	Primary antibodies
Short Description	
Applications	WB/ELISA
Host/Source	Rabbit
Reactivity	Human

PRODUCT PROPERTIES

Clonality	Monoclonal
Clone ID	SRM
Concentration	Lot specific
Conjugation	Unconjugated
Purification	Affinity purification
Dilution	WB:1:20000-1:60000
Range	ELISA:Recommended starting concentration is 1 µg/mL. Please optimize the concentration based on your specific assay requirements.
Formulation	PBS with 0.09% Sodium Azide, 0.05% BSA, 50% Glycerol, pH 7.3.
Isotype	IgG
Storage	
Instruction	

TARGET INFORMATION

Gene ID	2006
Gene Symbol	ELN
Uniprot ID	ELN_HUMAN
Immunogen	
Immunogen Region	27-200 aa
Specificity	Recombinant fusion protein containing a sequence corresponding to amino acids 27-200 of human ELN (NP_001265868.1). GGVPGAIPGGVPGGVFYPGA GLGALGGGALPGGKPLKPV PGGLAGAGLGAGLGAFFAVT FPGALVPGGVADAAAAYKAA
Immunogen Sequence	KAGAGLGGVPGVGGGLGVSAG AVVPQPGAGVKPGKVPGVGL PGVYPGGVLPGARFPGVGVL PGVPTGAGVKPKAPGVGGAF AGIPGVGPFGGPQP



This product is suitable for in-vitro studies under the RESEARCH USE ONLY [RUO] licence. This product must not be used as for diagnostic or other medical purposes.
St John's Laboratory Ltd, Knowledge Dock Business Centre, University Way, London, E16 2RD | Tel: 0208 223 3081