

Anti-RNF8 antibody (1-260 aa) [SRM] (STJ11107286)

STJ11107286

GENERAL INFORMATION

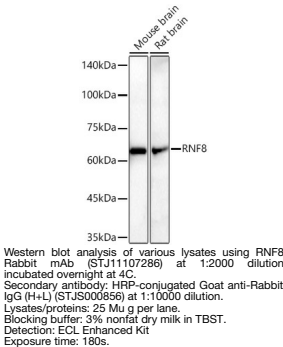
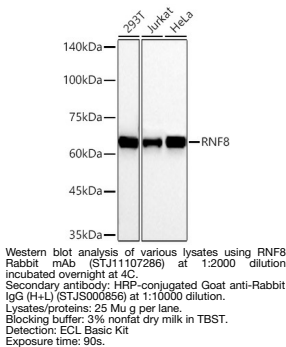
Product Type	Primary antibodies
Short Description	
Applications	WB/ELISA
Host/Source	Rabbit
Reactivity	Human/Mouse/Rat

PRODUCT PROPERTIES

Clonality	Monoclonal
Clone ID	SRM
Concentration	Lot specific
Conjugation	Unconjugated
Purification	Affinity purification
Dilution	WB:1:1000-1:2000
Range	ELISA:Recommended starting concentration is 1 Mu g/mL. Please optimize the concentration based on your specific assay requirements.
Formulation	PBS with 0.09% Sodium Azide, 0.05% BSA, 50% Glycerol, pH 7.3.
Isotype	IgG
Storage	
Instruction	

TARGET INFORMATION

Gene ID	9025
Gene Symbol	RNF8
Uniprot ID	RNF8_HUMAN
Immunogen	
Immunogen Region	1-260 aa
Specificity	Recombinant fusion protein containing a sequence corresponding to amino acids 1-260 of human RNF8 (NP_003949.1).
Immunogen Sequence	MGEPGFFVTGDRAGGRSWCL RRVGMSAGWLLLEDGCEVTV GRGFGVTYQLVSKICPLMIS RNHCVLKQNPGEQWWTIMDNK SLNGVWLNRARLEPLRVYSI HQGDYIQLGVPLENKENAEY EYEVTEEDWETIYPCLSPKN DQMIKKNELRTKRKFSLDE LAGPGAEGPSNLKSKINKVS CESGQPVKSQKGGEVASTPS DNLDPKLTALEPSKTTGAPI YPGFPKVTEVHHEQKASNS



This product is suitable for in-vitro studies under the RESEARCH USE ONLY [RUO] licence. This product must not be used as for diagnostic or other medical purposes.
St John's Laboratory Ltd, Knowledge Dock Business Centre, University Way, London, E16 2RD | Tel: 0208 223 3081