

Anti-FRS2 antibody (190-289 aa) [SRM] (STJ11107282)

STJ11107282

GENERAL INFORMATION

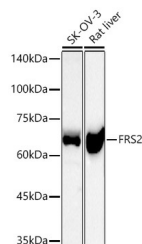
Product Type	Primary antibodies
Short Description	
Applications	WB/ELISA
Host/Source	Rabbit
Reactivity	Human/Mouse/Rat

PRODUCT PROPERTIES

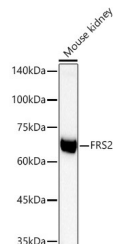
Clonality	Monoclonal
Clone ID	SRM
Concentration	Lot specific
Conjugation	Unconjugated
Purification	Affinity purification
Dilution Range	WB:1:1000-1:2000 ELISA:Recommended starting concentration is 1 Mu g/mL. Please optimize the concentration based on your specific assay requirements.
Formulation	PBS with 0.09% Sodium Azide, 0.05% BSA, 50% Glycerol, pH 7.3.
Isotype	IgG
Storage	
Instruction	

TARGET INFORMATION

Gene ID	10818
Gene Symbol	FRS2
Uniprot ID	FRS2_HUMAN
Immunogen	
Immunogen Region	190-289 aa
Specificity	A synthetic peptide corresponding to a sequence within amino acids 190-289 of human FRS2 (NP_006645.3).
Immunogen Sequence	EEQVHTYVNTTGVQEERKNR TSVHVPLEARVSNAESSTPK EEPSSIEDRDPQILLEPEGV KFLVGPTPVQQLMEKEKLE QLGRDQVSGSGANNTWDTG



Western blot analysis of various lysates using FRS2 Rabbit mAb (STJ11107282) at 1:1000 dilution incubated overnight at 4°C.
Secondary antibody: HRP-conjugated Goat anti-Rabbit IgG (H+L) (STJS000856) at 1:10000 dilution.
Lysates/proteins: 25 Mu g per lane.
Blocking buffer: 3% nonfat dry milk in TBST.
Detection: ECL Basic Kit
Exposure time: 60s.



Western blot analysis of lysates from Mouse kidney using FRS2 Rabbit mAb (STJ11107282) at 1:1000 dilution incubated overnight at 4°C.
Secondary antibody: HRP-conjugated Goat anti-Rabbit IgG (H+L) (STJS000856) at 1:10000 dilution.
Lysates/proteins: 25 Mu g per lane.
Blocking buffer: 3% nonfat dry milk in TBST.
Detection: ECL Basic Kit
Exposure time: 180s.

This product is suitable for in-vitro studies under the RESEARCH USE ONLY [RUO] licence. This product must not be used as for diagnostic or other medical purposes.
St John's Laboratory Ltd, Knowledge Dock Business Centre, University Way, London, E16 2RD | Tel: 0208 223 3081