

Anti-XRCC2 antibody (1-83 aa) [SRM] (STJ11107260)

STJ11107260

GENERAL INFORMATION

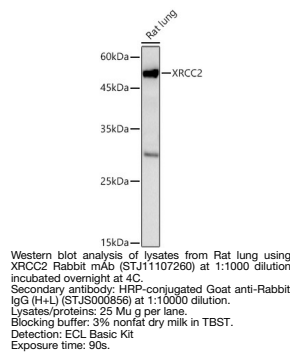
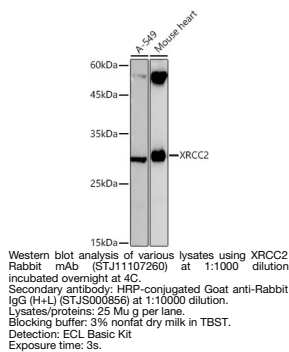
| | |
|--------------------------|--------------------|
| Product Type | Primary antibodies |
| Short Description | |
| Applications | WB/ELISA |
| Host/Source | Rabbit |
| Reactivity | Human/Mouse/Rat |

PRODUCT PROPERTIES

| | |
|----------------------------|---|
| Clonality | Monoclonal |
| Clone ID | SRM |
| Concentration | Lot specific |
| Conjugation | Unconjugated |
| Purification | Affinity purification |
| Dilution Range | WB:1:1000-1:6000 ELISA:Recommended starting concentration is 1 Mu g/mL. Please optimize the concentration based on your specific assay requirements. |
| Formulation | PBS with 0.09% Sodium Azide, 0.05% BSA, 50% Glycerol, pH 7.3. |
| Isotype | IgG |
| Storage Instruction | |

TARGET INFORMATION

| | |
|---------------------------|--|
| Gene ID | 7516 |
| Gene Symbol | XRCC2 |
| Uniprot ID | XRCC2_HUMAN |
| Immunogen | |
| Immunogen Region | 1-83 aa |
| Specificity | Recombinant fusion protein containing a sequence corresponding to amino acids 1-83 of human XRCC2 (NP_005422.1). |
| Immunogen Sequence | MCSAFHRAESGTELLARLEG RSSLKEIEPNLFADEDSPPVH GDILEFHGPEGTGKTEMLYH LTARCLPKSEGGLEVEVLV IDT |



This product is suitable for in-vitro studies under the RESEARCH USE ONLY [RUO] licence. This product must not be used as for diagnostic or other medical purposes.
St John's Laboratory Ltd, Knowledge Dock Business Centre, University Way, London, E16 2RD | Tel: 0208 223 3081