

Anti-Ret antibody (1000-1100 aa) [SRM] (STJ11107259)

STJ11107259

GENERAL INFORMATION

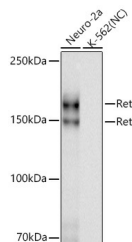
| | |
|--------------------------|--------------------|
| Product Type | Primary antibodies |
| Short Description | |
| Applications | WB/ELISA |
| Host/Source | Rabbit |
| Reactivity | Mouse/Rat |

PRODUCT PROPERTIES

| | |
|-----------------------|---|
| Clonality | Monoclonal |
| Clone ID | SRM |
| Concentration | Lot specific |
| Conjugation | Unconjugated |
| Purification | Affinity purification |
| Dilution Range | WB:1:1000-1:4000 ELISA:Recommended starting concentration is 1 Mu g/mL. Please optimize the concentration based on your specific assay requirements. |
| Formulation | PBS with 0.09% Sodium Azide, 0.05% BSA, 50% Glycerol, pH 7.3. |
| Isotype | IgG |
| Storage | |
| Instruction | |

TARGET INFORMATION

| | |
|---------------------------|---|
| Gene ID | 5979 |
| Gene Symbol | RET |
| Uniprot ID | RET_HUMAN |
| Immunogen | |
| Immunogen Region | 1000-1100 aa |
| Specificity | A synthetic peptide corresponding to a sequence within amino acids 1000-1100 of human Ret (NP_066124.1). |
| Immunogen Sequence | DISKDLEKMMVKRRDYLDLA ASTPSDSLIIYDDGLSEETP LVDCNNAPLPALPSTWIEN KLYGMSDPNWPGESPVPLTR ADGTNTGFPYPYNDVSVYANW M |



Western blot analysis of various lysates using Ret Rabbit mAb (STJ11107259) at 1:1000 dilution. Incubated overnight at 4°C. Secondary antibody: HRP-conjugated Goat anti-Rabbit IgG (H+L) (STJS000856) at 1:10000 dilution. Lysates/proteins: 25 Mu g per lane. Blocking buffer: 3% nonfat dry milk in TBST. Detection: ECL Basic Kit. Negative control (NC): K-562. Exposure time: 30s.

This product is suitable for in-vitro studies under the RESEARCH USE ONLY [RUO] licence. This product must not be used as for diagnostic or other medical purposes.
St John's Laboratory Ltd, Knowledge Dock Business Centre, University Way, London, E16 2RD | Tel: 0208 223 3081