

Anti-SLC23A2 antibody (551-650 aa) (STJ11107251)

STJ11107251

GENERAL INFORMATION

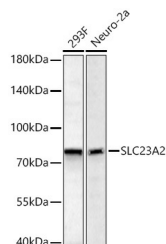
Product Type	Primary antibodies
Short Description	
Applications	WB/ELISA
Host/Source	Rabbit
Reactivity	Human/Mouse

PRODUCT PROPERTIES

Clonality	Polyclonal
Clone ID	
Concentration	Lot specific
Conjugation	Unconjugated
Purification	Affinity purification
Dilution Range	WB:1:2500-1:10000 ELISA:Recommended starting concentration is 1 Mu g/mL. Please optimize the concentration based on your specific assay requirements.
Formulation	PBS with 0.09% Sodium Azide, 50% Glycerol, pH 7.3.
Isotype	IgG
Storage Instruction	

TARGET INFORMATION

Gene ID	9962
Gene Symbol	SLC23A2
Uniprot ID	S23A2_HUMAN
Immunogen	
Immunogen	551-650 aa
Region	
Specificity	A synthetic peptide corresponding to a sequence within amino acids 551-650 of human SLC23A2 (NP_005107.4).
Immunogen	NVLLTTAMFVGGCVAFILDN TIPGTPEERGIRKWKKGVGK GNKSLDGMESYNLPFGMNII KKYRCFSYLPISPTFVGYSW
Sequence	KGLRKSDNSRSEDEDSQATG



Western blot analysis of various lysates using SLC23A2
Rabbit pAb (STJ11107251) at 1:5000 dilution incubated
overnight at 4°C.
Secondary antibody: HRP-conjugated Goat anti-Rabbit
IgG (H+L) (STJS000856) at 1:10000 dilution.
Lysates/proteins: 25 Mu g per lane.
Blocking buffer: 3% nonfat dry milk in TBST.
Detection: ECL Basic Kit
Exposure time: 60s.

This product is suitable for in-vitro studies under the RESEARCH USE ONLY [RUO] licence. This product must not be used as for diagnostic or other medical purposes.
St John's Laboratory Ltd, Knowledge Dock Business Centre, University Way, London, E16 2RD | Tel: 0208 223 3081