

Anti-SCD5 antibody (231-330 aa) (STJ11107249)

STJ11107249

GENERAL INFORMATION

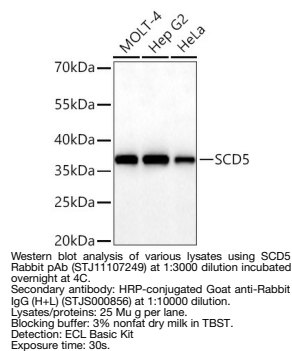
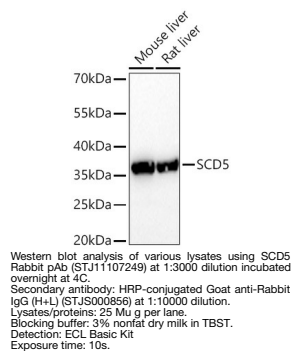
Product Type	Primary antibodies
Short Description	
Applications	WB/ELISA
Host/Source	Rabbit
Reactivity	Human/Mouse/Rat

PRODUCT PROPERTIES

Clonality	Polyclonal
Clone ID	
Concentration	Lot specific
Conjugation	Unconjugated
Purification	Affinity purification
Dilution Range	WB:1:3000-1:12000 ELISA:Recommended starting concentration is 1 µg/mL. Please optimize the concentration based on your specific assay requirements.
Formulation	PBS with 0.09% Sodium Azide, 50% Glycerol, pH 7.3.
Isotype	IgG
Storage	
Instruction	

TARGET INFORMATION

Gene ID	79966
Gene Symbol	SCD5
Uniprot ID	SCD5_HUMAN
Immunogen	
Immunogen Region	231-330 aa
Specificity	A synthetic peptide corresponding to a sequence within amino acids 231-330 of human SCD5 (NP_001032671.2).
Immunogen Sequence	SLNISWLVNSAAHMYGNRPY DKHISPRQNPLVALGAIGEG FHNYHHTFPFDYSASEFGLN FNPTTWFDIFMCWLGLATDR KRATKPMIEARKARTGDSSA



This product is suitable for in-vitro studies under the RESEARCH USE ONLY [RUO] licence. This product must not be used as for diagnostic or other medical purposes.
St John's Laboratory Ltd, Knowledge Dock Business Centre, University Way, London, E16 2RD | Tel: 0208 223 3081