

**Anti-HSP90B1 antibody (616-715 aa) [SRM] (STJ11107177)**  
STJ11107177

**GENERAL INFORMATION**

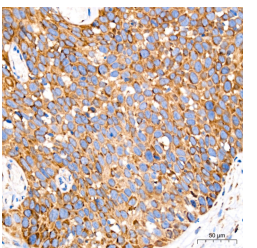
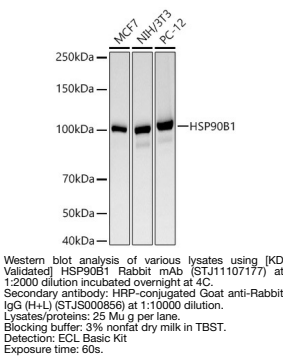
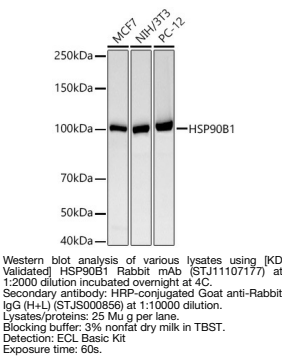
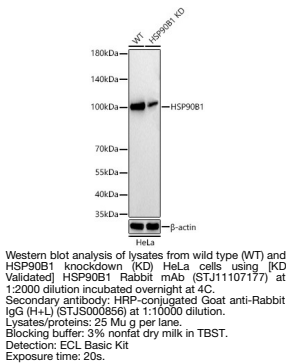
<b>Product Type</b>	Primary antibodies
<b>Short Description</b>	
<b>Applications</b>	WB/IHC-P/ELISA
<b>Host/Source</b>	Rabbit
<b>Reactivity</b>	Human/Mouse/Rat

**PRODUCT PROPERTIES**

<b>Clonality</b>	Monoclonal
<b>Clone ID</b>	SRM
<b>Concentration</b>	Lot specific
<b>Conjugation</b>	Unconjugated
<b>Purification</b>	Affinity purification
<b>Dilution Range</b>	WB:1:1000-1:5000 IHC-P:1:50-1:200 ELISA:Recommended starting concentration is 1 Mu g/mL. Please optimize the concentration based on your specific assay requirements.
<b>Formulation</b>	PBS with 0.05% Proclin300, 0.05% BSA, 50% Glycerol, pH 7.3.
<b>Isotype</b>	IgG
<b>Storage Instruction</b>	

**TARGET INFORMATION**

<b>Gene ID</b>	7184
<b>Gene Symbol</b>	HSP90B1
<b>Uniprot ID</b>	ENPL_HUMAN
<b>Immunogen</b>	
<b>Immunogen Region</b>	616-715 aa
<b>Specificity</b>	A synthetic peptide corresponding to a sequence within amino acids 616-715 of human HSP90B1 (NP_003290.1).
<b>Immunogen Sequence</b>	EPLLNWMDKDKALKIEKAV VSQRLTESPCALVASQYGWS GNMERIMKAQAYQTGKDIST NYYASQKKTFEINPRHPLIR DMLRRIKEDDDKTVLDLAV



Immunohistochemistry analysis of paraffin-embedded Human cervix cancer tissue using [KD Validated] HSP90B1 Rabbit mAb (STJ11107177) at a dilution of 1:200 (40x lens). High pressure antigen retrieval performed with 0.01M Citrate Buffer (pH 6.0) prior to immunohistochemistry staining.