

Anti-FRA1 antibody (1-100 aa) [SRM] (STJ11107151)

STJ11107151

GENERAL INFORMATION

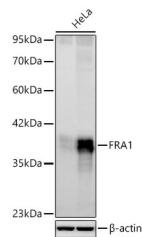
Product Type	Primary antibodies
Short Description	
Applications	WB/ELISA
Host/Source	Rabbit
Reactivity	Human

PRODUCT PROPERTIES

Clonality	Monoclonal
Clone ID	SRM
Concentration	Lot specific
Conjugation	Unconjugated
Purification	Affinity purification
Dilution Range	WB:1:2000-1:10000 ELISA:Recommended starting concentration is 1 Mu g/mL. Please optimize the concentration based on your specific assay requirements.
Formulation	PBS with 0.09% Sodium Azide, 0.05% BSA, 50% Glycerol, pH 7.3
Isotype	IgG
Storage	
Instruction	

TARGET INFORMATION

Gene ID	8061
Gene Symbol	FOSL1
Uniprot ID	FOSL1_HUMAN
Immunogen	
Immunogen Region	1-100 aa
Specificity	A synthetic peptide corresponding to a sequence within amino acids 1-100 of human FRA1 (NP_005429.1).
Immunogen Sequence	MFRDFGEPGPSSGNGGGYGG PAQPPAAQAQKQKHLVPS INTMSGSQELQWMVQPHFLG PSSYPRPLTYPQYSPQPRP GVIRALGPPPGVRRRPCEQI



Western blot analysis of lysates from HeLa cells using FRA1 Rabbit mAb (STJ11107151) at 1:10000 dilution. Cells were treated with PMA (100 ng/ml) at 37°C for 4 hours after serum-starvation overnight. Secondary antibody: HRP-conjugated Goat anti-Rabbit IgG (H+L) (STJS000855) at 1:10000 dilution. Lysates/proteins: 30 Mu g per lane. Blocking buffer: 3 % nonfat dry milk in TBST. Detection: ECL Basic Kit. Exposure time: 30s.

This product is suitable for in-vitro studies under the RESEARCH USE ONLY [RUO] licence. This product must not be used as for diagnostic or other medical purposes.
St John's Laboratory Ltd, Knowledge Dock Business Centre, University Way, London, E16 2RD | Tel: 0208 223 3081