

## Anti-ZNF683 antibody (420-524 aa) (STJ11107150)

STJ11107150

### GENERAL INFORMATION

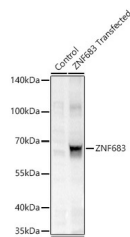
<b>Product Type</b>	Primary antibodies
<b>Short Description</b>	
<b>Applications</b>	WB/ELISA
<b>Host/Source</b>	Rabbit
<b>Reactivity</b>	Human

### PRODUCT PROPERTIES

<b>Clonality</b>	Polyclonal
<b>Clone ID</b>	
<b>Concentration</b>	Lot specific
<b>Conjugation</b>	Unconjugated
<b>Purification</b>	Affinity purification
<b>Dilution Range</b>	WB:1:500-1:1000 ELISA:Recommended starting concentration is 1 $\mu$ g/mL. Please optimize the concentration based on your specific assay requirements.
<b>Formulation</b>	PBS with 0.09% Sodium Azide, 50% Glycerol, pH 7.3
<b>Isotype</b>	IgG
<b>Storage</b>	
<b>Instruction</b>	

### TARGET INFORMATION

<b>Gene ID</b>	257101
<b>Gene Symbol</b>	ZNF683
<b>Uniprot ID</b>	ZNF683_HUMAN
<b>Immunogen</b>	
<b>Immunogen Region</b>	420-524 aa
<b>Specificity</b>	Recombinant fusion protein containing a sequence corresponding to amino acids 420-524 of human ZNF683 (NP_001294854.1).
<b>Immunogen Sequence</b>	HSGARPFQCSVCRSRFTQHI HLKLLHRLHAPQPCGLVHTQ LPLASLACLAQWHQGALDLM AVASEKHMGYDIDEVKVSST SQGKARAVSLSSAGTPLVMG QDQNN



Western blot analysis of lysates from wild type (WT) and 293F cells transfected with ZNF683 using ZNF683 Rabbit pAb (STJ11107150) at 1:1000 dilution incubated overnight at 4°C.  
Secondary antibody: HRP-conjugated Goat anti-Rabbit IgG (H+L) (STJ5000856) at 1:10000 dilution.  
Lysates/proteins: 20  $\mu$ g per lane.  
Blocking buffer: 3% nonfat dry milk in TBST.  
Detection: ECL Basic Kit (Exposure time: 10s).

This product is suitable for in-vitro studies under the RESEARCH USE ONLY [RUO] licence. This product must not be used as for diagnostic or other medical purposes.  
St John's Laboratory Ltd, Knowledge Dock Business Centre, University Way, London, E16 2RD | Tel: 0208 223 3081