

Anti-Human IgG2-Fc antibody (99-326 aa) [SRM] (STJ11107129)
STJ11107129

GENERAL INFORMATION

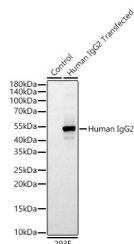
Product Type	Primary antibodies
Short Description	
Applications	WB/ELISA
Host/Source	Rabbit
Reactivity	Human

PRODUCT PROPERTIES

Clonality	Monoclonal
Clone ID	SRM
Concentration	Lot specific
Conjugation	Unconjugated
Purification	Affinity purification
Dilution	WB:1:1000-1:4000
Range	ELISA:Recommended starting concentration is 1 Mu g/mL. Please optimize the concentration based on your specific assay requirements.
Formulation	PBS with 0.09% Sodium Azide, 0.05% BSA, 50% Glycerol, pH 7.3.
Isotype	IgG
Storage	
Instruction	

TARGET INFORMATION

Gene ID	
Gene Symbol	IGHG2
Uniprot ID	IGHG2_HUMAN
Immunogen	
Immunogen Region	99-326 aa
Specificity	Recombinant fusion protein containing a sequence corresponding to amino acids 99-326 of human IgG2 (Fc) (P01859). EPRIPKPSTPPGSSCPPGNI LGGPSVFIFPPKPKDALMIS LTPKVTCVVVDVSEDDPDVH VSWFVDNKEVHTAWTQPREA QYNSTFRVVSALPIQHQDWM RGKEFKCKVNNKALPAPIER TISKPKGRAQTPQVYTIPPP REQMSKKKVSCLVTNFFS EAIISVEWERNGELEQDYKNT PPILDSGDTYFLYSKLTVD T DSWLQGEIFTCVSVHEALHN HHTQKNLSRSPGK
Immunogen Sequence	



Western blot analysis of lysates from wild type (WT) and 293F cells transfected with Human IgG2 using Rabbit Anti-Human IgG2 (Fc) mAb (STJ11107129) at 1:1000 dilution incubated overnight at 4°C.
Secondary antibody: HRP-conjugated Goat anti-Rabbit IgG (H+L) (STJS000859) at 1:10000 dilution.
Lysates/proteins: 20 Mu g per lane.
Blocking buffer: 3% nonfat dry milk in TBST.
Detection: ECL Basic Kit (Exposure time: 30s.

This product is suitable for in-vitro studies under the RESEARCH USE ONLY [RUO] licence. This product must not be used as for diagnostic or other medical purposes.
St John's Laboratory Ltd, Knowledge Dock Business Centre, University Way, London, E16 2RD | Tel: 0208 223 3081