

Anti-Yipf6 antibody (1-83 aa) [SRM] (STJ11107122)

STJ11107122

GENERAL INFORMATION

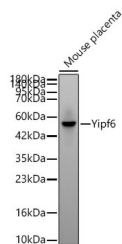
Product Type	Primary antibodies
Short Description	
Applications	WB/ELISA
Host/Source	Rabbit
Reactivity	Mouse

PRODUCT PROPERTIES

Clonality	Monoclonal
Clone ID	SRM
Concentration	Lot specific
Conjugation	Unconjugated
Purification	Affinity purification
Dilution Range	WB:1:1000-1:2000 ELISA:Recommended starting concentration is 1 µg/mL. Please optimize the concentration based on your specific assay requirements.
Formulation	PBS with 0.05% Proclin300, 0.05% BSA, 50% Glycerol, pH 7.3.
Isotype	IgG
Storage Instruction	

TARGET INFORMATION

Gene ID	77929
Gene Symbol	Yipf6
Uniprot ID	YIPF6_MOUSE
Immunogen	
Immunogen Region	1-83 aa
Specificity	Recombinant fusion protein containing a sequence corresponding to amino acids 1-83 of mouse Yipf6 (NP_997516.1).
Immunogen Sequence	MAEAEDSPGEQEAASKPLF AGLSDVSIQSDIPIEGEITI PSRARAQEHDSSTLNESIRR TIMRDLKAVGRKFMHVLVYR KSN



Western blot analysis of lysates from Mouse placenta using Yipf6 Rabbit mAb (STJ11107122) at 1:1000 dilution incubated overnight at 4°C.
Secondary antibody: HRP-conjugated Goat anti-Rabbit IgG (H+L) (STJS000856) at 1:10000 dilution.
Lysates/proteins: 25 µg per lane.
Blocking buffer: 3% nonfat dry milk in TBST.
Detection: ECL Basic Kit
Exposure time: 90s.

This product is suitable for in-vitro studies under the RESEARCH USE ONLY [RUO] licence. This product must not be used as for diagnostic or other medical purposes.
St John's Laboratory Ltd, Knowledge Dock Business Centre, University Way, London, E16 2RD | Tel: 0208 223 3081