

## Anti-CCR7 antibody (211-310 aa) (STJ11107115)

STJ11107115

### GENERAL INFORMATION

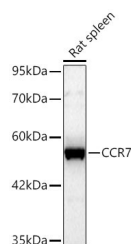
<b>Product Type</b>	Primary antibodies
<b>Short Description</b>	
<b>Applications</b>	WB/ELISA
<b>Host/Source</b>	Rabbit
<b>Reactivity</b>	Rat

### PRODUCT PROPERTIES

<b>Clonality</b>	Polyclonal
<b>Clone ID</b>	
<b>Concentration</b>	Lot specific
<b>Conjugation</b>	Unconjugated
<b>Purification</b>	Affinity purification
<b>Dilution Range</b>	WB:1:500-1:1000 ELISA:Recommended starting concentration is 1 µg/mL. Please optimize the concentration based on your specific assay requirements.
<b>Formulation</b>	PBS with 0.05% Proclin300, 50% Glycerol, pH 7.3.
<b>Isotype</b>	IgG
<b>Storage Instruction</b>	

### TARGET INFORMATION

<b>Gene ID</b>	12775
<b>Gene Symbol</b>	Ccr7
<b>Uniprot ID</b>	CCR7_MOUSE
<b>Immunogen</b>	
<b>Immunogen Region</b>	211-310 aa
<b>Specificity</b>	A synthetic peptide corresponding to a sequence within amino acids 211-310 of mouse CCR7 (NP_031745.2).
<b>Immunogen Sequence</b>	SLVSAQVEALTIQVQMVF GFLVPLMAMSFCYLIIRTL LQARNFERNKAIVIAVVV VFIVFQLPYNGVLAQTVAN FNITNSSCETSKQLNIAYDV



Western blot analysis of lysates from Rat spleen using CCR7 Rabbit pAb (STJ11107115) at 1:1000 dilution incubated overnight at 4°C.  
Secondary antibody: HRP-conjugated Goat anti-Rabbit IgG (H+L) (STJS000856) at 1:10000 dilution.  
Lysates/proteins: 25 µg per lane.  
Blocking buffer: 3% nonfat dry milk in TBST.  
Detection: ECL Basic Kit  
Exposure time: 90s.

This product is suitable for in-vitro studies under the RESEARCH USE ONLY [RUO] licence. This product must not be used as for diagnostic or other medical purposes.  
St John's Laboratory Ltd, Knowledge Dock Business Centre, University Way, London, E16 2RD | Tel: 0208 223 3081