

Anti-CYP8B1 antibody (311-410 aa) (STJ11107113)

STJ11107113

GENERAL INFORMATION

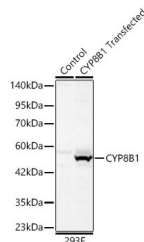
Product Type	Primary antibodies
Short Description	
Applications	WB/IF/CC/ELISA
Host/Source	Rabbit
Reactivity	Human/Mouse/Rat

PRODUCT PROPERTIES

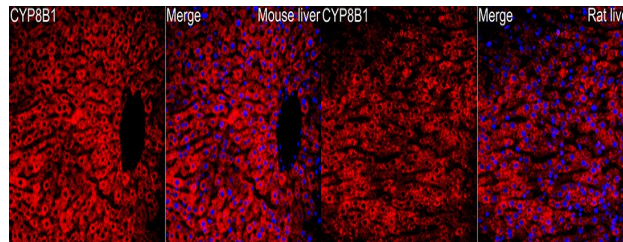
Clonality	Polyclonal
Clone ID	
Concentration	Lot specific
Conjugation	Unconjugated
Purification	Affinity purification
Dilution Range	WB:1:500-1:1000 IF/CC:1:100-1:500 ELISA:Recommended starting concentration is 1 Mu g/mL. Please optimize the concentration based on your specific assay requirements.
Formulation	PBS with 0.05% Proclin300, 50% Glycerol, pH 7.3.
Isotype	IgG
Storage Instruction	

TARGET INFORMATION

Gene ID	1582
Gene Symbol	CYP8B1
Uniprot ID	CP8B1_HUMAN
Immunogen	
Immunogen Region	311-410 aa
Specificity	A synthetic peptide corresponding to a sequence within amino acids 311-410 of human CYP8B1 (NP_004382.2).
Immunogen Sequence	ATQVLGEARLETKQSFAFKL GALQHTPVLDSSVEETLRLR AAPTLRLVHEDYTLKMSSG QEYLFRRHGDILALFPYLSVH MDPDIHPEPTVFKYDRFLN



Western blot analysis of lysates from wild type (WT) and 293F cells transfected with CYP8B1 using CYP8B1 Rabbit pAb (STJ11107113) at 1:1000 dilution incubated overnight at 4°C. Secondary antibody: HRP-conjugated Goat anti-Rabbit IgG (H+L) (STJS000656) at 1:10000 dilution. Lysates/proteins: 20 Mu g per lane. Blocking buffer: 3% nonfat dry milk in TBST. Detection: ECL Basic Kit (Exposure time: 30s.



Immunofluorescence analysis of Mouse liver tissue using CYP8B1 Rabbit pAb (STJ11107113) at a dilution of 1:100 (40x lens). Secondary antibody: Cy3-conjugated Goat anti-Rabbit IgG (H+L) (STJS001166) at 1:500 dilution. Blue: DAPI for nuclear staining. High pressure antigen retrieval performed with 0. 01M Citrate Buffer (pH 6. 0) prior to IF staining.

Immunofluorescence analysis of Rat liver tissue using CYP8B1 Rabbit pAb (STJ11107113) at a dilution of 1:100 (40x lens). Secondary antibody: Cy3-conjugated Goat anti-Rabbit IgG (H+L) (STJS001166) at 1:500 dilution. Blue: DAPI for nuclear staining. High pressure antigen retrieval performed with 0. 01M Citrate Buffer (pH 6. 0) prior to IF staining.

This product is suitable for in-vitro studies under the RESEARCH USE ONLY [RUO] licence. This product must not be used as for diagnostic or other medical purposes.
St John's Laboratory Ltd, Knowledge Dock Business Centre, University Way, London, E16 2RD | Tel: 0208 223 3081