

## Anti-PATZ1 antibody (250-350 aa) [SRM] (STJ11107107)

STJ11107107

### GENERAL INFORMATION

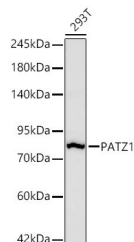
<b>Product Type</b>	Primary antibodies
<b>Short Description</b>	
<b>Applications</b>	WB/ELISA
<b>Host/Source</b>	Rabbit
<b>Reactivity</b>	Human

### PRODUCT PROPERTIES

<b>Clonality</b>	Monoclonal
<b>Clone ID</b>	SRM
<b>Concentration</b>	Lot specific
<b>Conjugation</b>	Unconjugated
<b>Purification</b>	Affinity purification
<b>Dilution Range</b>	WB:1:1000-1:2000 ELISA:Recommended starting concentration is 1 Mu g/mL. Please optimize the concentration based on your specific assay requirements.
<b>Formulation</b>	PBS with 0.05% Proclin300, 0.05% BSA, 50% Glycerol, pH 7.3.
<b>Isotype</b>	IgG
<b>Storage</b>	
<b>Instruction</b>	

### TARGET INFORMATION

<b>Gene ID</b>	23598
<b>Gene Symbol</b>	PATZ1
<b>Uniprot ID</b>	PATZ1_HUMAN
<b>Immunogen</b>	
<b>Immunogen Region</b>	250-350 aa
<b>Specificity</b>	Recombinant fusion protein containing a sequence corresponding to amino acids 250-350 of human PATZ1 (NP_055138.2).
<b>Immunogen Sequence</b>	PFPSVASSAPPLTGKRGGR PRKANLLDSMFGSPGGLREA GILPCGLCGKVFTDANRLRQ HEAQHGVTSLQLGYIDLPPP RLGENGLPISEDPDGPRKRS R



Western blot analysis of lysates from 293T cells using PATZ1 Rabbit mAb (STJ11107107) at 1:1000 dilution incubated overnight at 4°C.  
Secondary antibody: HRP-conjugated Goat anti-Rabbit IgG (H+L) (STJS000856) at 1:10000 dilution.  
Lysates/proteins: 25 Mu g per lane.  
Blocking buffer: 3% nonfat dry milk in TBST.  
Detection: ECL Basic Kit  
Exposure time: 90s.

This product is suitable for in-vitro studies under the RESEARCH USE ONLY [RUO] licence. This product must not be used as for diagnostic or other medical purposes.  
St John's Laboratory Ltd, Knowledge Dock Business Centre, University Way, London, E16 2RD | Tel: 0208 223 3081