

Anti-EPB42 antibody (589-691 aa) (STJ11107087)

STJ11107087

GENERAL INFORMATION

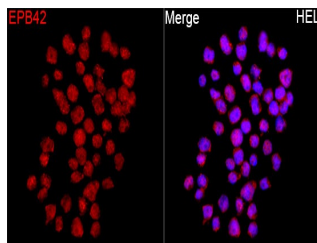
Product Type	Primary antibodies
Short Description	
Applications	IF/ICC/ELISA
Host/Source	Rabbit
Reactivity	Human/Mouse

PRODUCT PROPERTIES

Clonality	Polyclonal
Clone ID	
Concentration	Lot specific
Conjugation	Unconjugated
Purification	Affinity purification
Dilution Range	IF/ICC:1:50-1:200 ELISA:Recommended starting concentration is 1 Mu g/mL. Please optimize the concentration based on your specific assay requirements.
Formulation	PBS with 0.05% Proclin300, 50% Glycerol, pH 7.3.
Isotype	IgG
Storage	
Instruction	

TARGET INFORMATION

Gene ID	2038
Gene Symbol	EPB42
Uniprot ID	EPB42_HUMAN
Immunogen	
Immunogen Region	589-691 aa
Specificity	Recombinant fusion protein containing a sequence corresponding to amino acids 589-691 of human EPB42 (NP_001107606.1).
Immunogen Sequence	HLAIKMPEKAEQYQPLTASV SLQNSLDAPMEDCVISILGR GLIHRERSYRFRSVWPENTM CAKFQFTPTHVGLQRLTVEV DCNMFQNLNTNYKSVTVVAPE LSA



Immunofluorescence analysis of HEL cells using EPB42 Rabbit pAb (STJ11107087) at a dilution of 1:100 (40x lens). Secondary antibody: Cy3 Goat Anti-Rabbit IgG (H+L) (STJ3001166) at 1:500 dilution. Blue: DAPI for nuclear staining.

This product is suitable for in-vitro studies under the RESEARCH USE ONLY [RUO] licence. This product must not be used as for diagnostic or other medical purposes.
St John's Laboratory Ltd, Knowledge Dock Business Centre, University Way, London, E16 2RD | Tel: 0208 223 3081